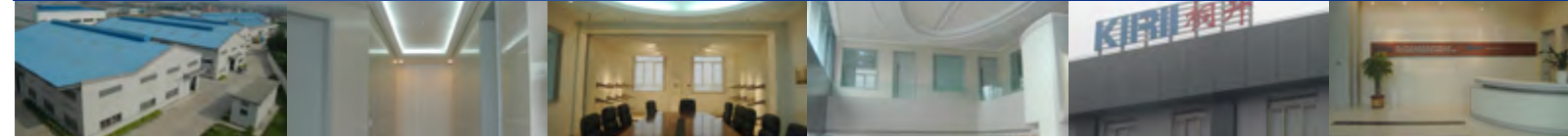




# Metal Ceiling Metal Cladding

**KIRII**  
**Wellbono**®

# Company Introduction



**Kirii Sanshui Building Materials Fty. Ltd.** is a foreign investment enterprise. Parent company is **KIRII Construction Material Co. Ltd.**, the biggest metal construction products manufacturer in Japan. There is a certain number of manufacturing plants located in Japan, Hong Kong, Shanghai and Guangdong. The sales network covers all over the world.



In the end of 2005, **Kirii South China Holding Company Ltd.** was formed in Hong Kong. In the beginning of 2006, we invested to the Greater Pearl River Delta - Sanshui Area of Fo Shan City in Guangdong Province and collaborated with **Intellect Building Materials Fty. Ltd.** to realize products diversification and extend sales network.

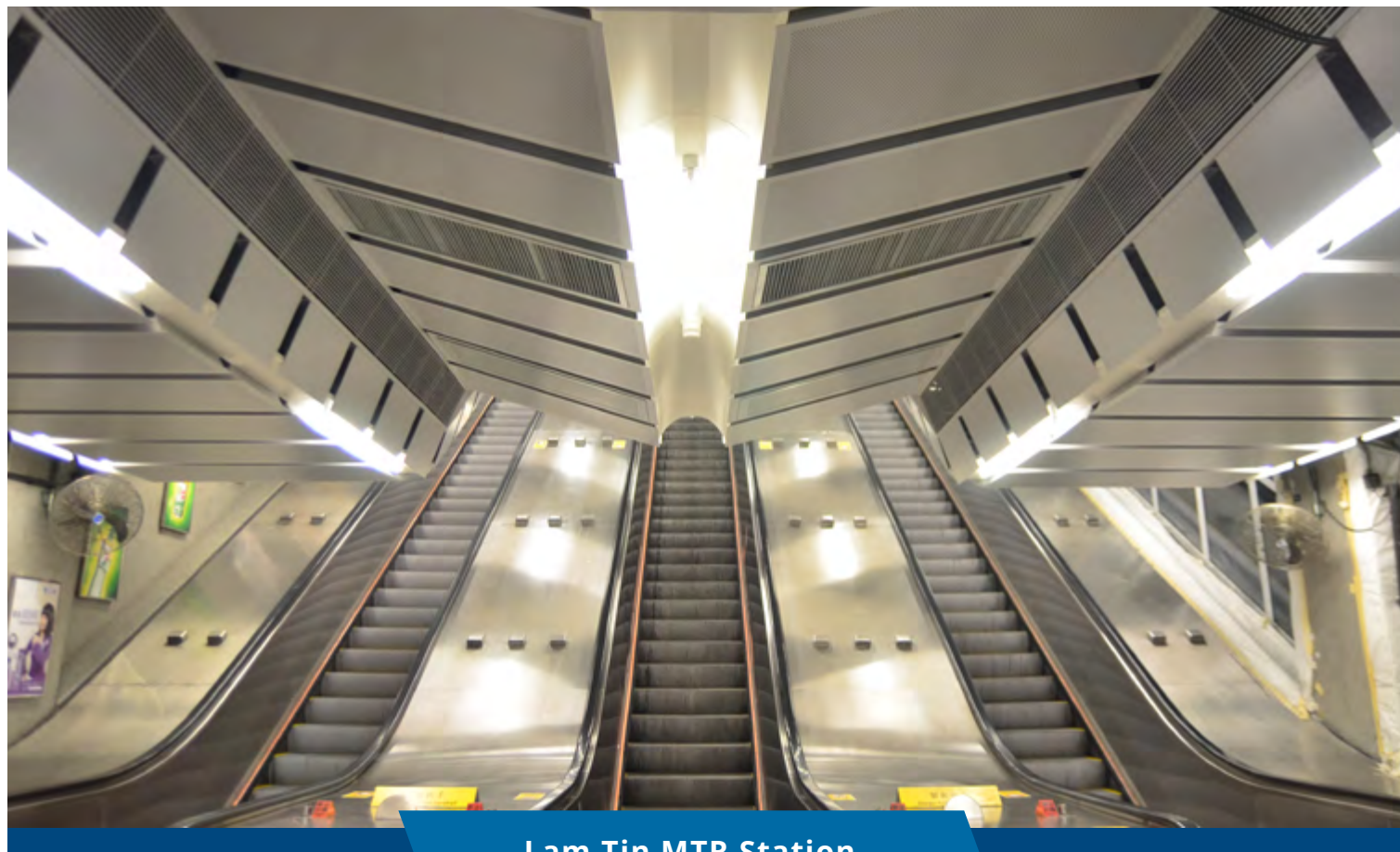
Intellect is the specialist in manufacturing of metal ceiling and cladding. Their brand, **Wellbone ®**, is well-known in the domestic and overseas market. They also provided design service and solution to suit the customer's need.

**Kirii Sanshui Building Materials Fty. Ltd.** invested over HKD30 million and registered capital was HKD21.5 million. The land area and plants area are covered 16,000 square meter and 12,000 square meter respectively. The production capacity of metal ceiling and accessories is at least 800 thousand m<sup>2</sup> and cladding and G.I. for drywall and ceiling frame system are 200 thousand m<sup>2</sup> and 2,500 metric tons respectively. The factory is equipped with modernized facilities. The powder coating line is used the technology introduced from Europe and Japan to assure the quality stability.

The management team of the company are all experienced in the field. With 200 workers and **ISO 9001:2000** management system, we improve our product quality, enrich our product lines and enhance construction performance and customer satisfaction.



# MTR Projects



Lam Tin MTR Station



Che Kung Temple MTR Station



Sha Tin Wai MTR Station



Heng Fa Cheun MTR Station



Jordan MTR Station



Hong Kong MTR Station



Sheung Wan MTR Station



Admiralty MTR Station



# Public Facilities



The Maritime Services  
Training Institute (Hong Kong)



Changi Airport T1 DFS  
(Singapore)



Changi Airport T3 DFS  
(Singapore)



Wuzhou Culture & Art Centre  
(China)



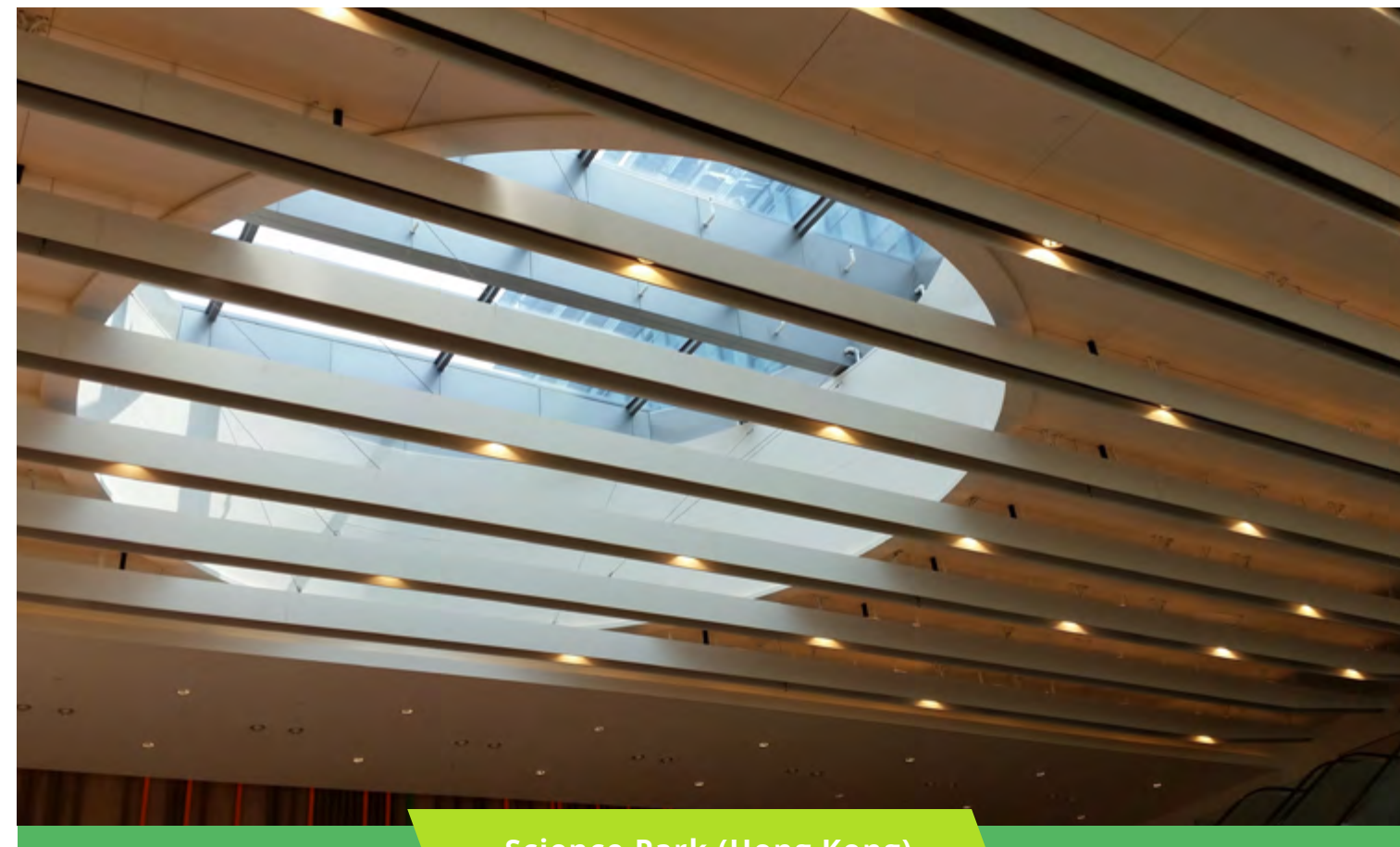
St. Paul's House of Prayer  
(Hong Kong)



CityU AC3 Bistro  
(Hong Kong)



Oi! (Hong Kong)



Science Park (Hong Kong)



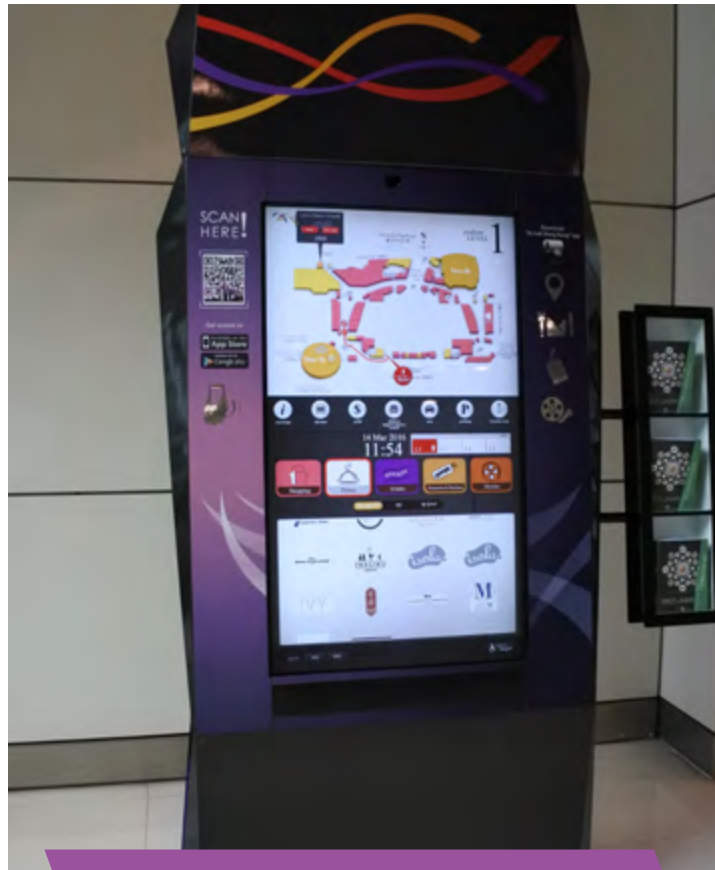
St. Joseph's Anglo-Chinese  
School (Hong Kong)



Yan Chai Hospital Block  
C (Hong Kong)



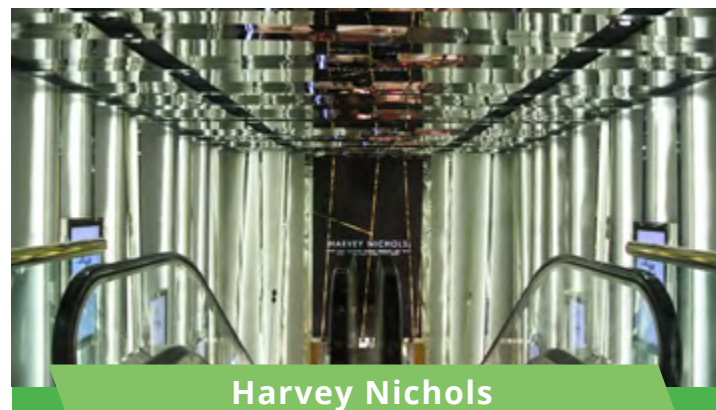
# Commercial Projects



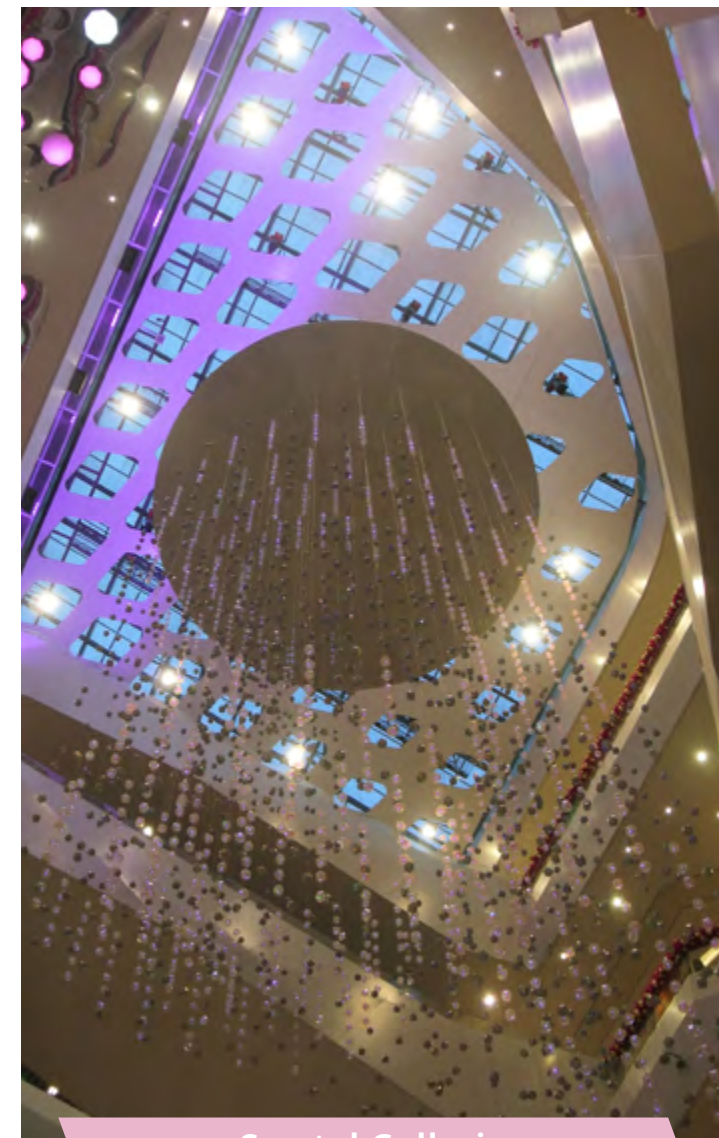
IFC mall (Hong Kong)



i Square (Hong Kong)



Harvey Nichols  
(Hong Kong)



Crystal Galleria  
(Shanghai)



Shanghai Tower (Shanghai)



D Park (Hong Kong)



Chuk Yuen Plaza  
(Hong Kong)



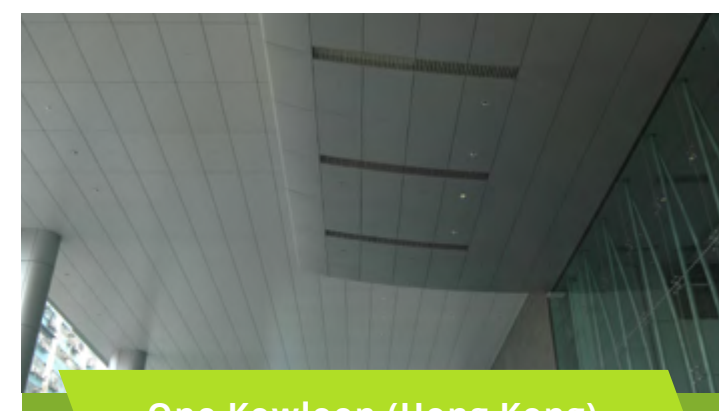
Atlantis Blue Restaurant  
(Hong Kong)



iapm mall (Shanghai)



Guangzhou International  
Finance Center (Guangzhou)



One Kowloon (Hong Kong)



One Island East  
(Hong Kong)



# Residential Projects



Island Resort  
(Hong Kong)



Ocean View (Hong Kong)



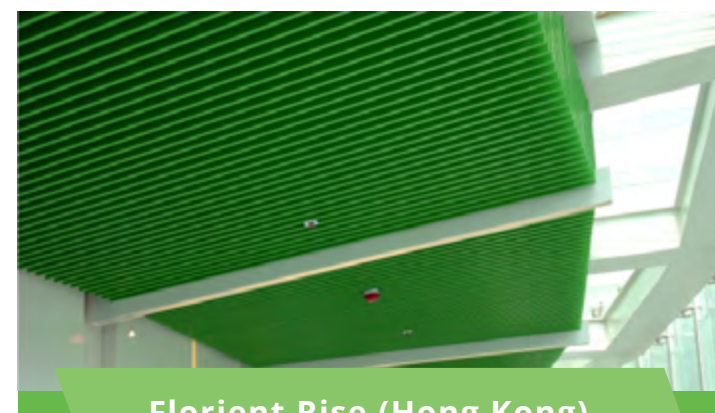
Manhattan Hill  
(Hong Kong)



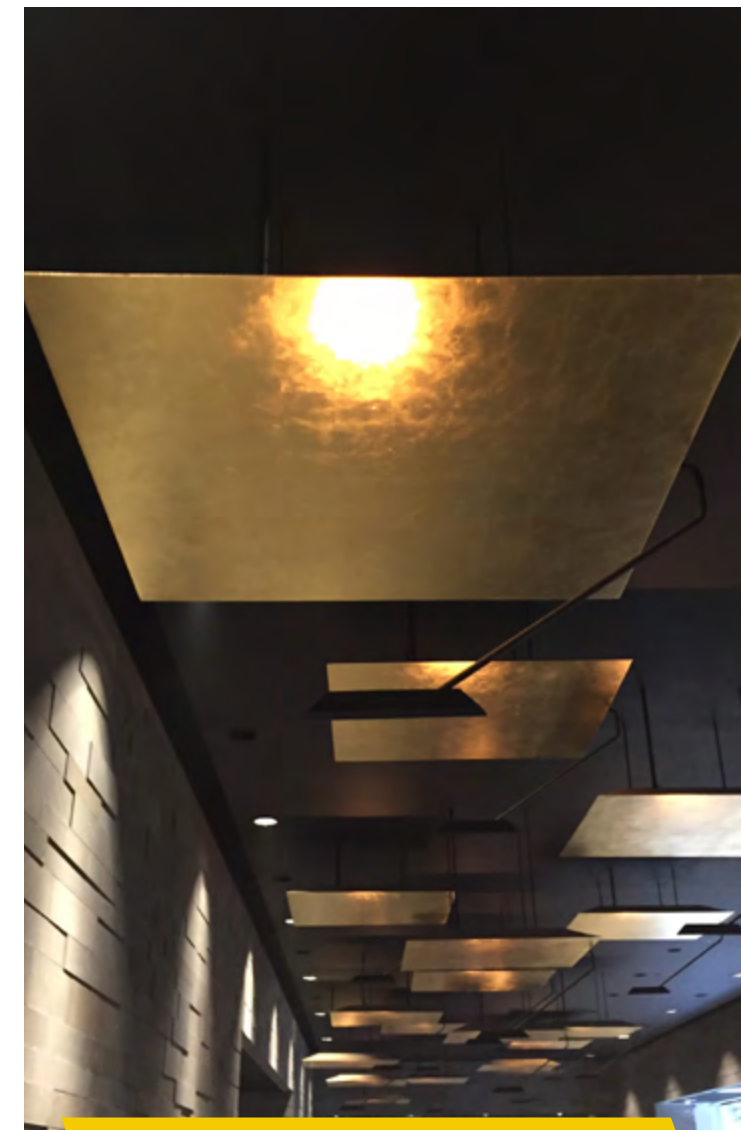
Ultima (Hong Kong)



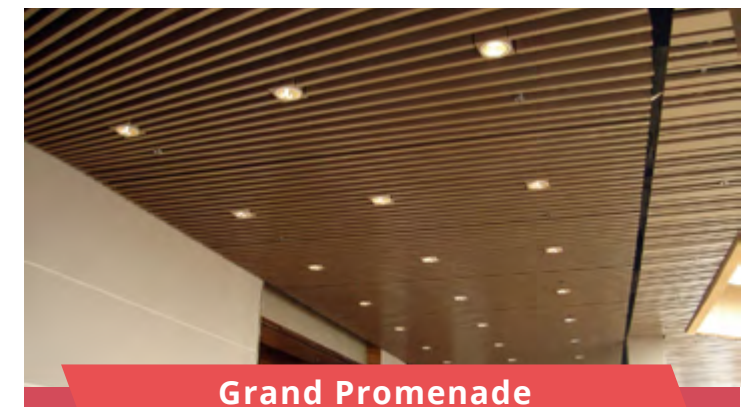
The Avenue (Hong Kong)



Florient Rise (Hong Kong)



The Pavilia Hill (Hong Kong)



Grand Promenade  
(Hong Kong)

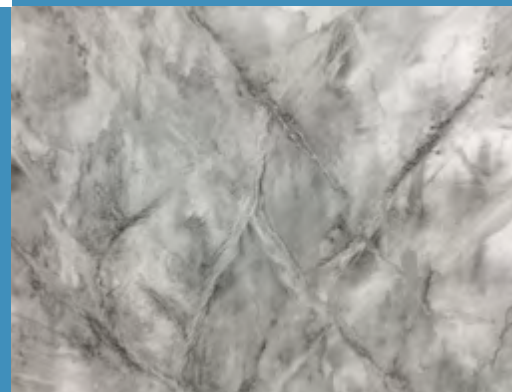
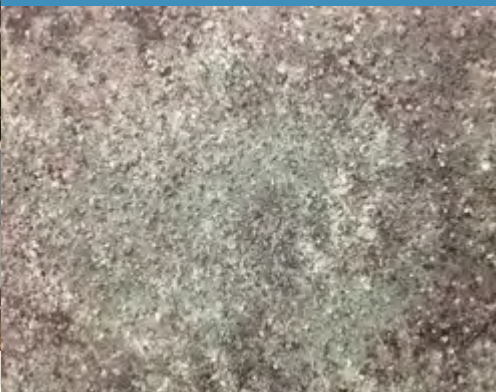
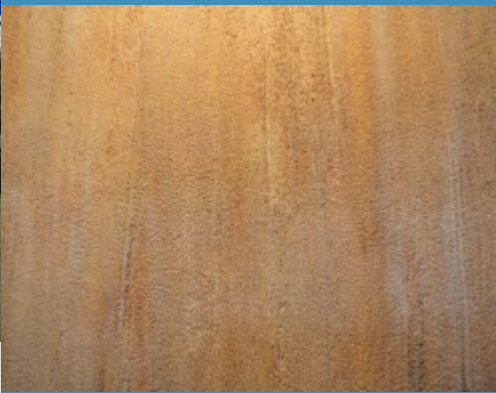
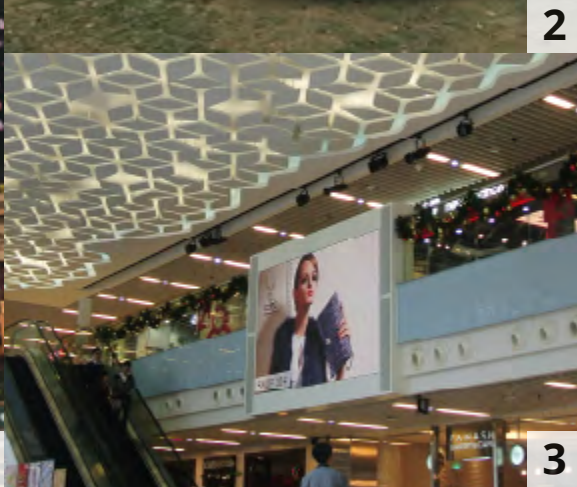


The Visionary  
(Hong Kong)

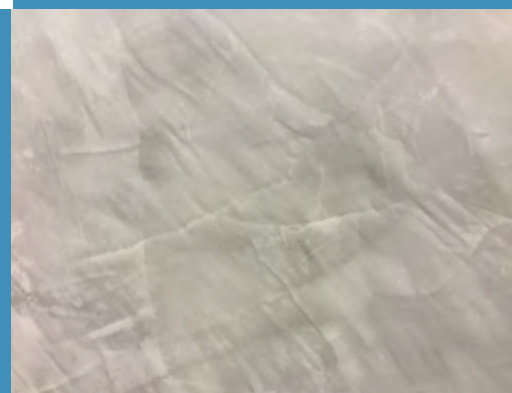
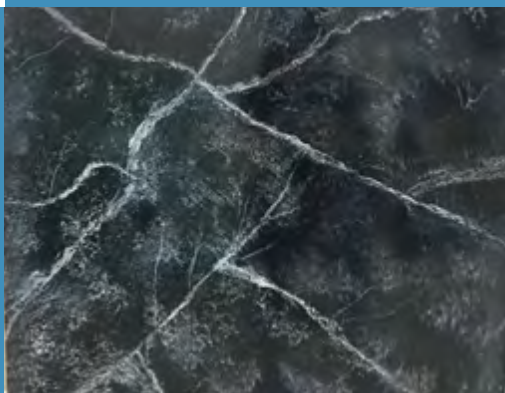
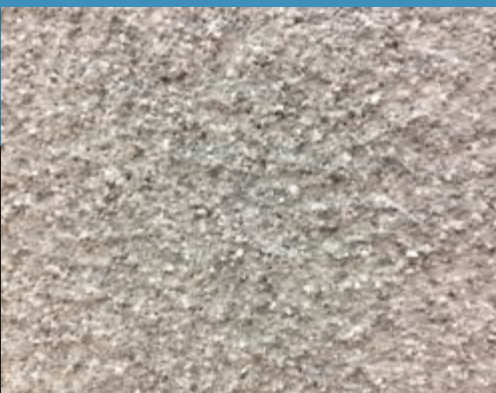


# Designed Ceiling & Special Products

There are some examples of special pattern.  
They can be the finishing on the aluminum ceiling panel or cladding.



Wellbone® works with design specialists to produce variety of ceilings and claddings. We combine Aluminum with Special Printing and Plaster. In addition, we provide different solutions to fulfill your uniqueness ideas. We can provide different solutions and fabricate special products on the metal ceiling and cladding.



1. Protean Paint Aluminum Panel at Changi Airport DFS (Singapore)

2. Special Bench at Oil Street Art Space (Hong Kong)

3. Designed Ceiling at iSquare (Hong Kong)

4. White Board Paint Wall Panel at Office (Hong Kong)

5. Special Perforated Ceiling at Chuk Yuen Plaza (Hong Kong)

6. Gold Leafing Aluminum Ceiling at The Pavilia Hill (Hong Kong)



# Products Series: CP 022-type Clip-in Ceiling Series



## System Description:

Wellbone® CP 022-type Clip-in Ceiling Series is a traditional design and suitable for the interior decoration. The series can also mix with different size of squares and rectangles to suit various design. Wellbone® also provides integrated lighting fixture, ceiling access hatch and air-conditioning vent to match with the system requirement. This series is not recommended for outdoor application.

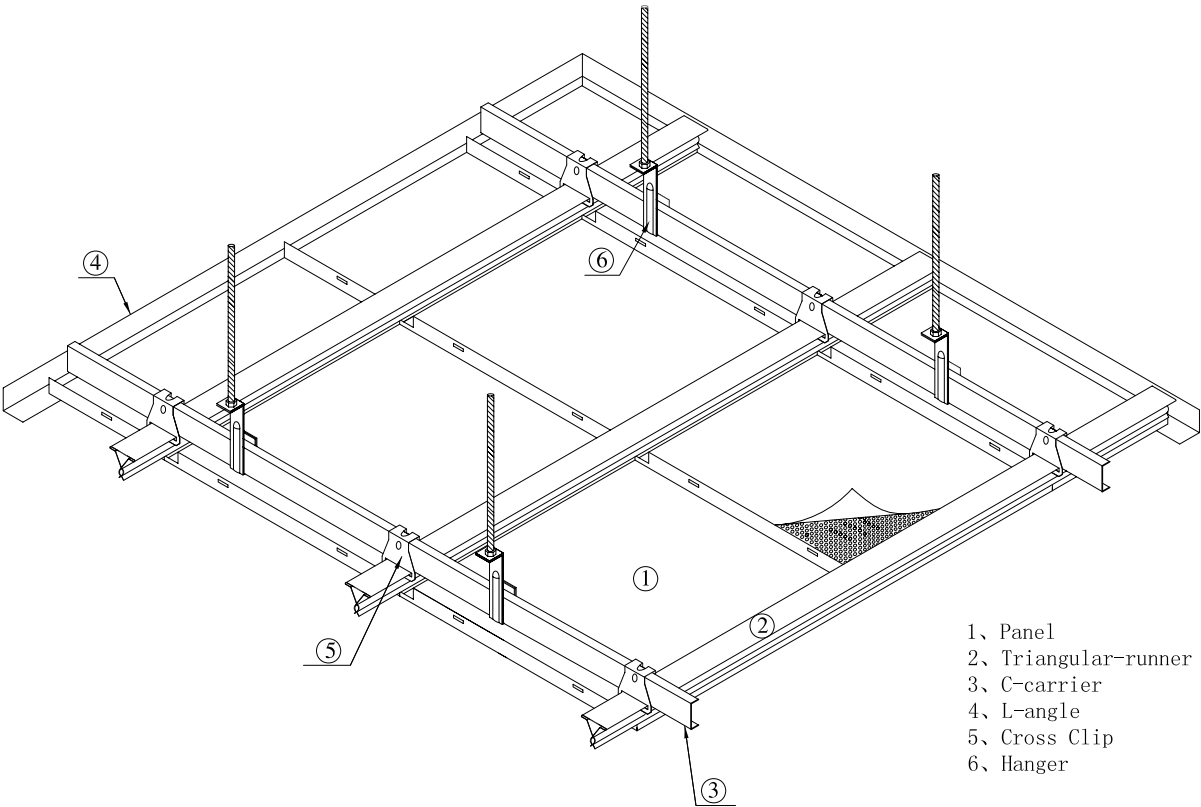
Material: Aluminum Alloy / Galvanized Steel  
Coating: Powder Coating / PVF2  
Color: RAL Color  
Perforation: Refer to Perforation Pattern

## Installation:

The ceiling is suspended by Triangular-runner which is fixed at the bottom of C-carrier by using Cross Clip. Each Panel is clipped into triangular-runner. All accessories are made from galvanized steel.

## Specification Table

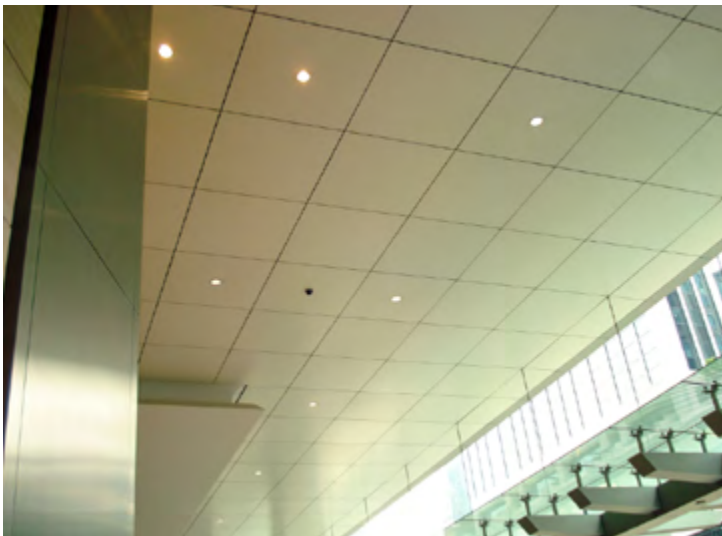
Dimension	Thickness
1200 x 600 x 22 mm	0.8 mm
1200 x 300 x 22 mm	0.7 mm
600 x 600 x 22 mm	0.7 mm
600 x 300 x 22 mm	0.6 mm
300 x 300 x 22 mm	0.6 mm



- 1、Panel
- 2、Triangular-runner
- 3、C-carrier
- 4、L-angle
- 5、Cross Clip
- 6、Hanger



# Products Series: CP 030-type Clip-in Ceiling Series



## System Description:

Wellbone® CP 030-type Clip-in Ceiling Series is a traditional design suitable for the interior decoration. The series also can mix with different size of squares and rectangles to suit various design. Wellbone® also provides integrated lighting fixture, ceiling access hatch and air-conditioning vent to match with the system requirement. This series is not recommended for outdoor application.

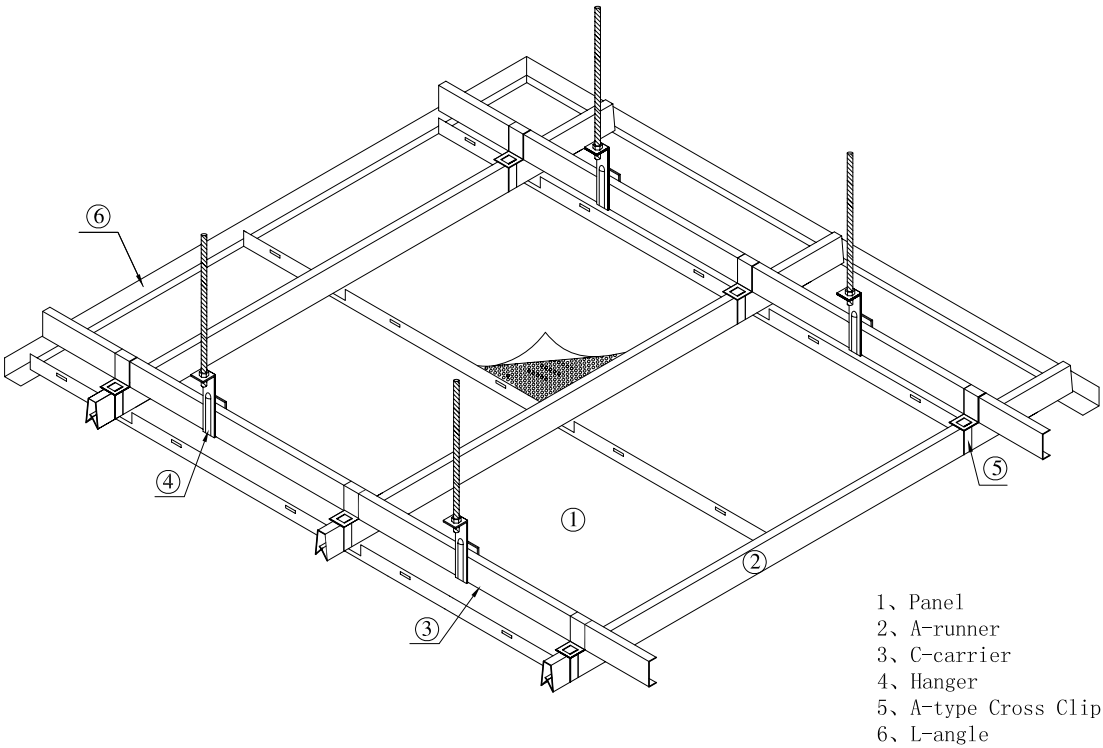
## Installation:

The ceiling is suspended by A-runner which is fixed at the bottom of 38C-carrier by using A-type cross clip. Each Panel is clipped into A-runner. All accessories are made from galvanized steel.

## Specification Table

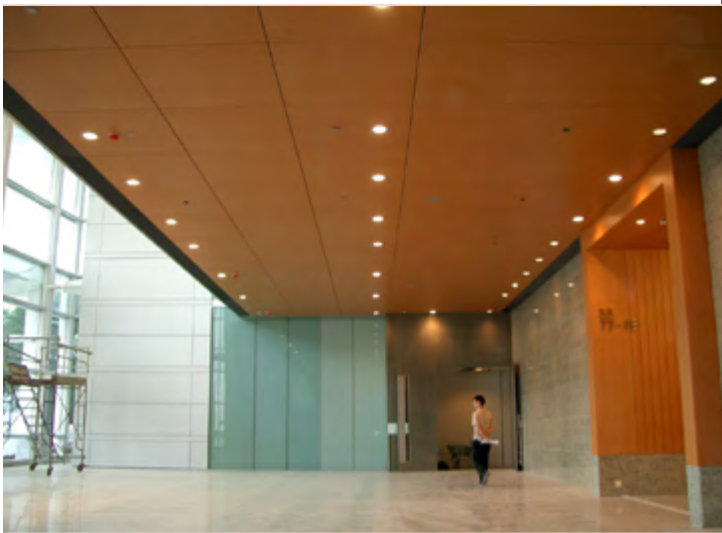
Dimension	Thickness
1200 x 600 x 30 mm	1.0 mm, 0.8 mm
1200 x 300 x 30 mm	1.0 mm, 0.7 mm
600 x 600 x 30 mm	0.7 mm
600 x 300 x 30 mm	0.7 mm
300 x 300 x 30 mm	0.7 mm

Material: Aluminum Alloy / Galvanized Steel  
Coating: Powder Coating / PVF2  
Color: RAL Color  
Perforation: Refer to Perforation Pattern





# Products Series: HP-type Hook-on Ceiling Series



## System Description:

Wellbone® Hook-on ceiling has excellent performance in wind load and suitable for both indoor and outdoor application. It is common to use in Design Ceiling. There are mainly two categories: Standard Size and Non-Standard Size. For Standard Size, please refer to Specification Table. For the Non-standard Size, Wellbone® can produce panel up to 3000mm in length and up to 1500mm in width. Wellbone® also provide solution based on each unique design.

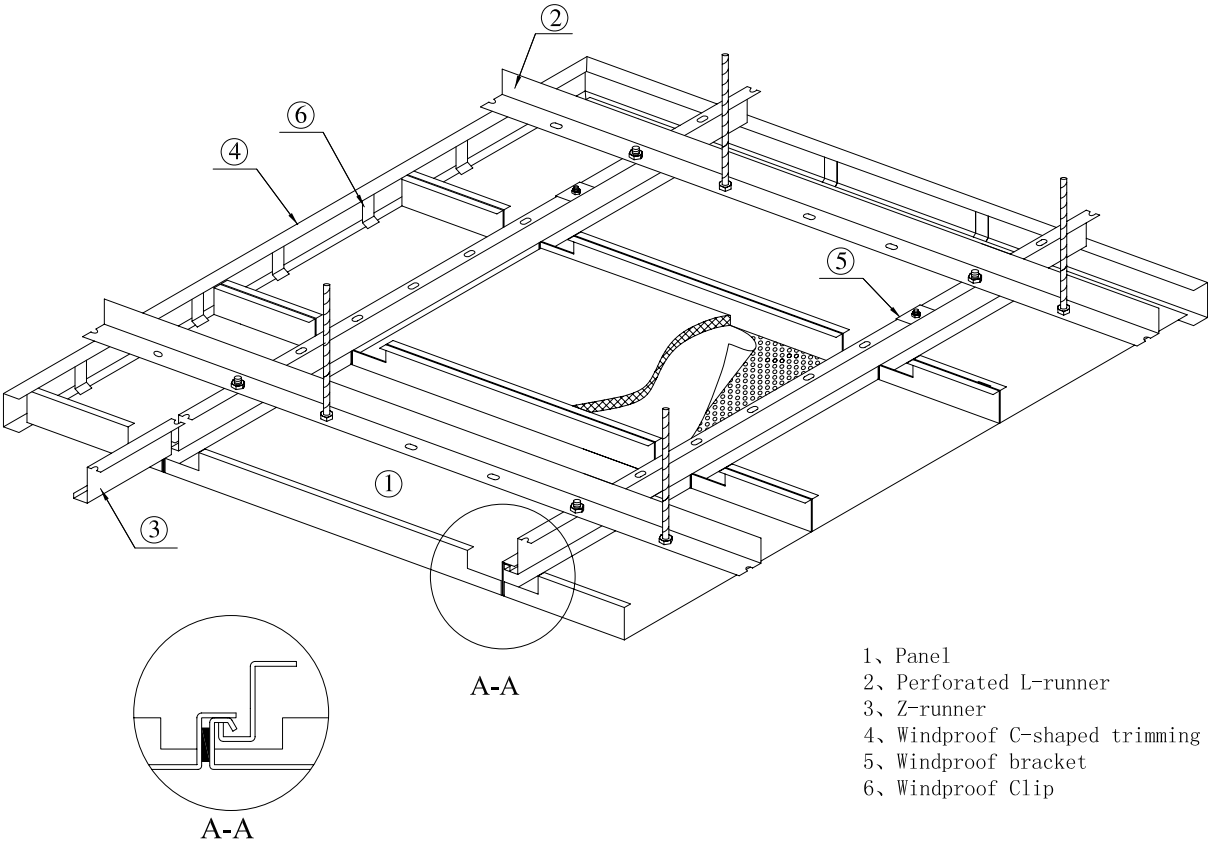
- Material:** Aluminum Alloy / Galvanized Steel
- Coating:** Powder Coating / PVF2
- Color:** RAL Color
- Perforation:** Refer to Perforation Pattern

## Installation:

The ceiling is suspended by Z-runner which is fixed at the bottom of Perforated L-runner by using screws. Windproof clip is required for outdoor application. All accessories are made from galvanized steel.

## Specification Table

Dimension	Thickness
1200 x 600 x 30 mm	1.2 mm
1200 x 600 x 30 mm	1.0 mm
1200 x 400 x 30 mm	0.8 mm
1200 x 300 x 30 mm	0.8 mm
1200 x 300 x 30 mm	0.7 mm
600 x 600 x 30 mm	1.0 mm
600 x 600 x 30 mm	0.7 mm
600 x 600 x 22 mm	0.7 mm





# Products Series: KT-type Lay-in Ceiling Series



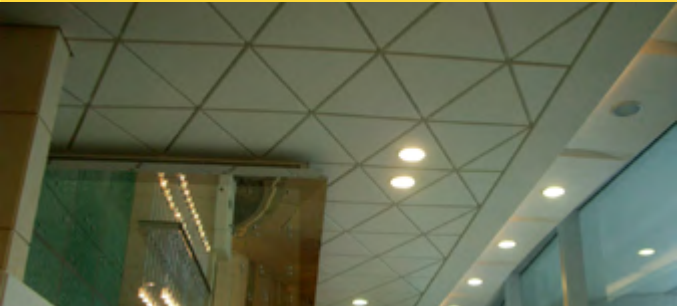
## System Description:

Wellbone® Lay-in Ceiling series is the most simple and traditional ceiling for interior decoration. It can be widely used in offices, shopping arcade, hospitals, schools, restaurants, banks and hotels.

- Material:** Aluminum Alloy / Galvanized Steel
- Coating:** Powder Coating / PVF2
- Color:** RAL Color
- Perforation:** Refer to Perforation Pattern

## Installation:

The ceiling is suspended by the combination of 3000mm Main Tee, 1200mm and 600mm Cross Tee which is hanged by hanger. All accessories are made from galvanized steel.

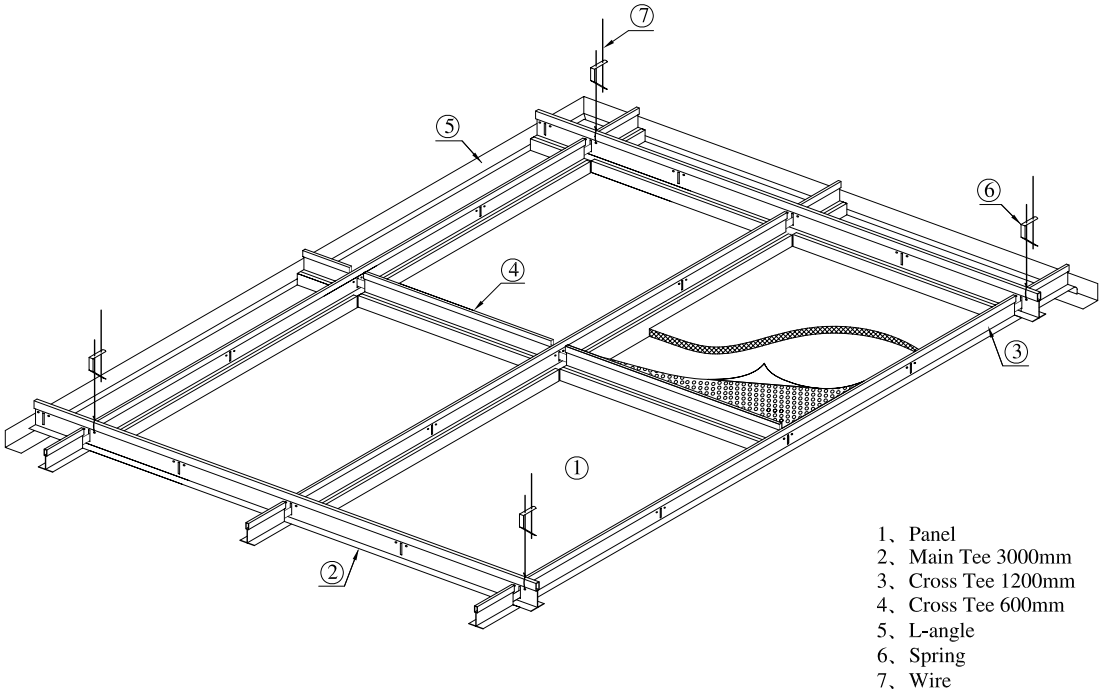


## Specification Table

KT24 - Dimension	Height	Material Thickness	
585 x 585 mm	8 mm	0.7 mm Aluminum	0.5 mm Steel
1185 x 585 mm	8 mm	0.8 mm Aluminum	0.6 mm Steel
285 x 285 mm	8 mm	0.7 mm Aluminum	0.5 mm Steel
1185 x 285 mm	8 mm	0.7 mm Aluminum	0.5 mm Steel
1185 x 394.5 mm	8 – 30 mm	0.8 mm Aluminum	0.6 mm Steel
1185 x 296 mm	8 – 30 mm	0.7 mm Aluminum	0.5 mm Steel

KT24 - Dimension	Height	Material Thickness	
584 x 584 mm	8 – 20 mm	0.7 mm Aluminum	0.5 mm Steel
1184 x 584 mm	8 – 20 mm	0.8 mm Aluminum	0.6 mm Steel
284 x 284 mm	8 – 20 mm	0.7 mm Aluminum	0.5 mm Steel
1184 x 284 mm	8 – 20 mm	0.7 mm Aluminum	0.5 mm Steel
1184 x 394.5 mm	8 – 30 mm	0.8 mm Aluminum	0.6 mm Steel
1184 x 296 mm	8 – 30 mm	0.7 mm Aluminum	0.5 mm Steel

KT24 - Dimension	Height	Material Thickness	
575 x 575 mm	8 – 20 mm	0.6 - 0.7 mm Aluminum	0.5 mm Steel
595 x 595 mm	22 mm	0.6 - 0.7 mm Aluminum	0.5 mm Steel
595 x 1195 mm	22 mm	0.8 mm Aluminum	0.6 mm Steel
1175 x 575 mm	8 – 20 mm	0.8 mm Aluminum	0.7 mm Steel
275 x 275 mm	8 – 20 mm	0.6 - 0.7 mm Aluminum	0.5 mm Steel
1175 x 275 mm	8 – 20 mm	0.6 - 0.7 mm Aluminum	0.5 mm Steel
1175 x 391.5 mm	8 – 30 mm	0.7 - 0.8 mm Aluminum	0.6 mm Steel
1175 x 293.5 mm	8 – 30 mm	0.6 - 0.7 mm Aluminum	0.5 mm Steel



- 1, Panel
- 2, Main Tee 3000mm
- 3, Cross Tee 1200mm
- 4, Cross Tee 600mm
- 5, L-angle
- 6, Spring
- 7, Wire



# Products Series: UO-type Baffle Ceiling Series

## System Description:

The baffle ceiling series is an open space design. Its unique linear pattern can stimulate visual effect from different perspective. The simple structure and installation help to reduce the installation period. It is suitable for the large-scale open space such as railway station, shopping mall, shopping arcade and other public area. Wellbone® baffle ceiling series has a range of shapes and sizes to suit different design. Besides, it can be custom-made to fulfill customer's requirement.

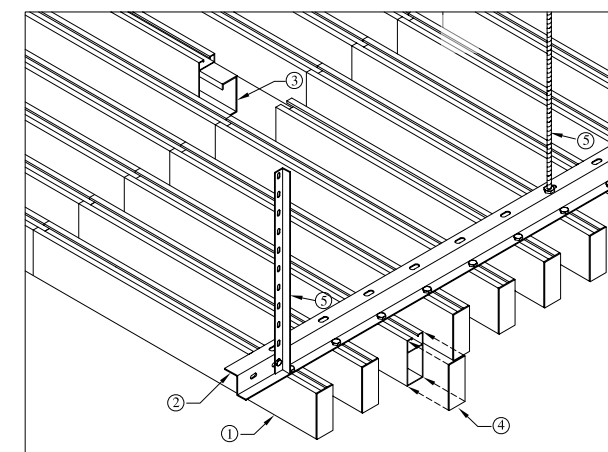
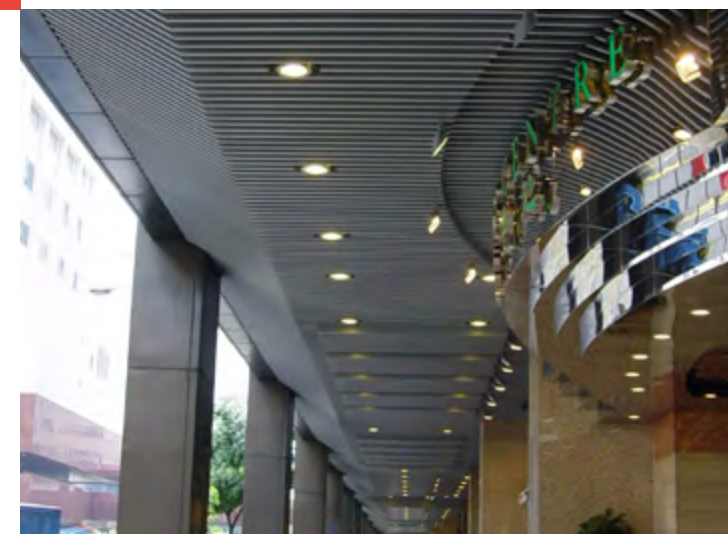
**Material:** Aluminum alloy / Galvanized Steel  
**Coating:** Powder Coating / PVF2  
**Color:** RAL Colors

## Installation:

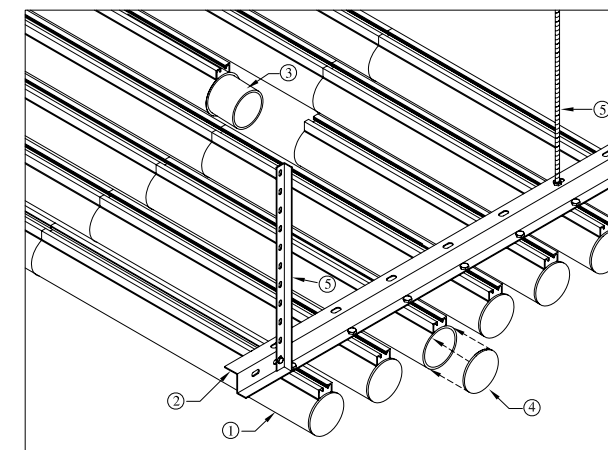
The installation of baffle ceiling system is easy and simple. The ceiling is suspended by Perforated Z-runner which is hanged by screw rod or GMS Angle. The baffle section is fixed by bolts at the bottom of Perforated Z-runner. For outdoor application, it is recommended to use GMS Angle if wind load is concerned.

## Specification Table

Model No.	Dimension
U2550	25(W)mm x 50(H)mm
U2580	25(W)mm x 80(H)mm
U25100	25(W)mm x 100(H)mm
U3095	30(W)mm x 95(H)mm
U35100	35(W)mm x 100(H)mm
U50100	50(W)mm x 100(H)mm
O38	38(D)mm & 43(H)mm
O50	50(D)mm & 55(H)mm
O75	75(D)mm & 80(H)mm



- 1、Baffle Ceiling
- 2、Perforated Z-runner
- 3、Joint
- 4、Cover
- 5、Bolt Or Metal Angle



- 1、Tubular Ceiling
- 2、Perforated Z-runner
- 3、Tubular Joint
- 4、Cover
- 5、Bolt Or Metal Angle



# Products Series: TG-type Tartan Grid Ceiling Series



## System Description:

Wellbone® TG-type Tartan Grid Ceiling Series is the most unique ceiling systems. It provides the greatest flexibility in line with other trade during the construction program. The system is suitable for large open area such as office buildings, railway stations, banks and general interior ceiling decoration.

The system consists of wide grid and center box. Center box can be designed in hexagonal to form a 60° angle system. This will provide the biggest flexibility in design.

Tartan grid series mainly two categories: Standard size (refer to specifications table) and Non-

- Material: Aluminum Alloy / Galvanized Steel
- Coating: Powder Coating / PVF2
- Color: RAL Color
- Perforation: Refer to Perforation Pattern

Standard size. For the Non-standard size, we can provide solutions based on the idea of designer. Panel size is up to 4000mm in length, and 50~1500mm in width. The wide grid from 50~1200mm is available.

## Installation:

Suspension frame consist of Wide Grid and Center Box. The center box is suspended by suspension bolt. The wide grid is connected to the center box by screw fixing to form the tartan grid system. The panel will be laid on to complete installation. All accessories are made from galvanized steel.

## Specification Table Ceiling Panel

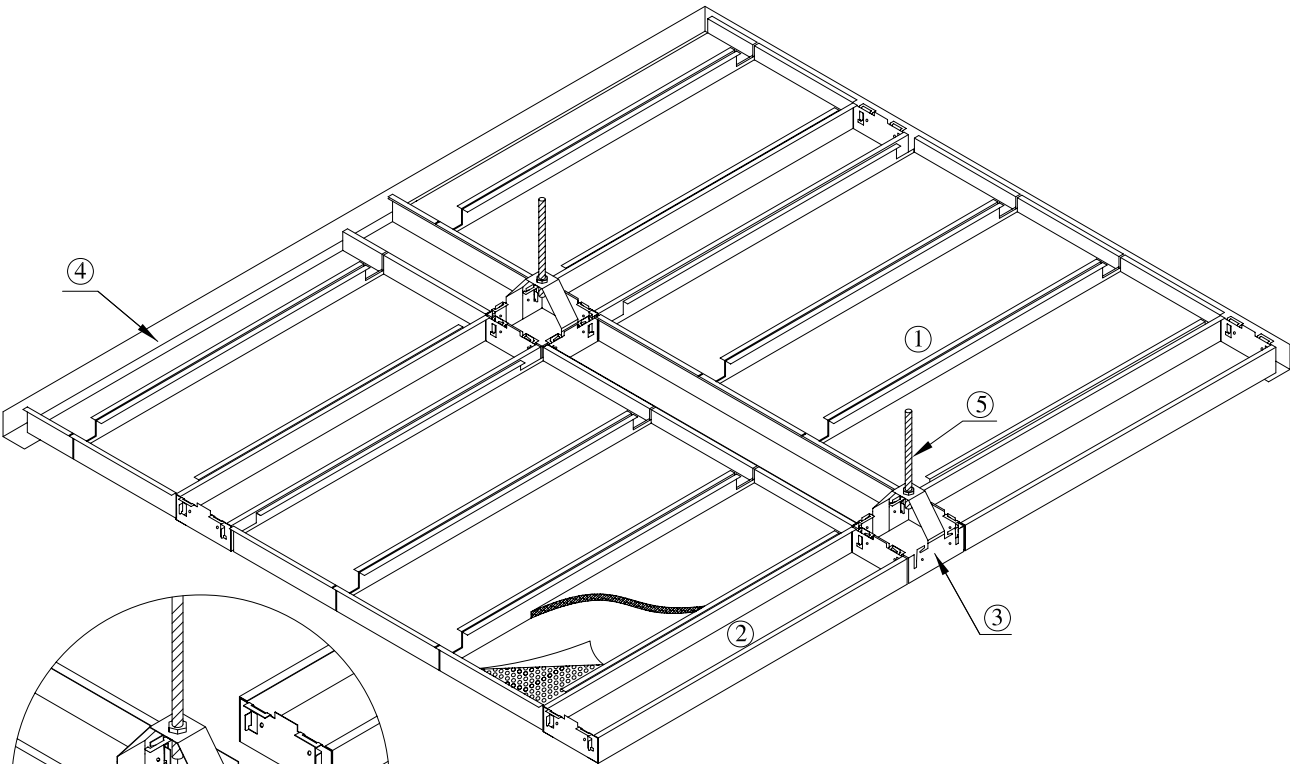
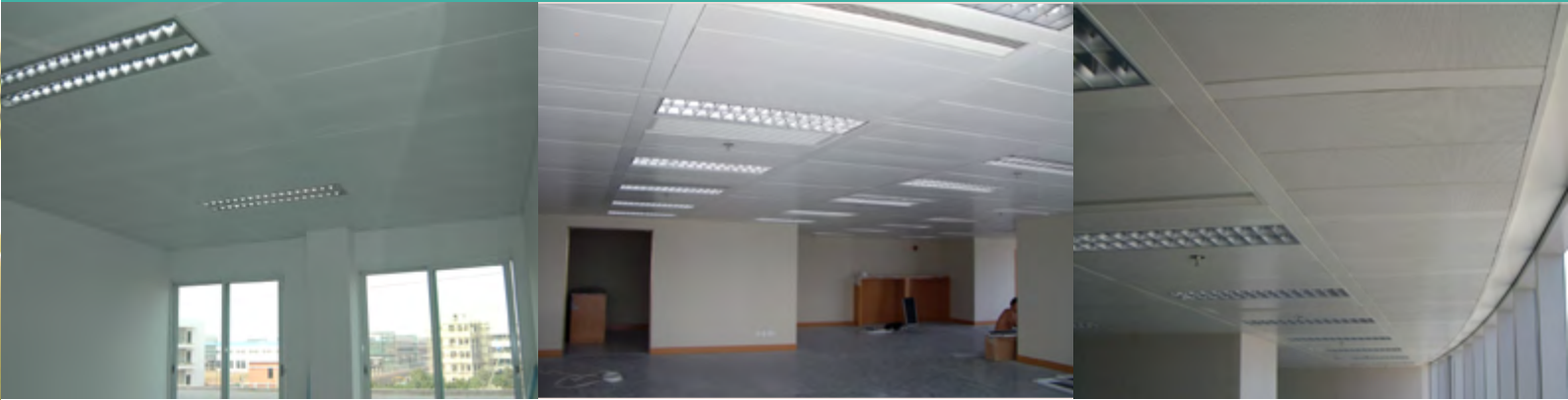
Length	Width	Thickness	Material
1200 mm	300 mm	0.7 mm	Aluminum
1200 mm	300 mm	1.0 mm	Aluminum
1200 mm	400 mm	0.8 mm	Aluminum
1200 mm	400 mm	1.0 mm	Aluminum
1200 mm	600 mm	0.8 mm	Aluminum
1200 mm	600 mm	1.0 mm	Aluminum

## Centre Box

Specification	Thickness	Material
100 x 100 mm	1.2 mm	Steel
150 x 150 mm	1.2 mm	Steel
200 x 200 mm	1.2 mm	Steel
300 x 300 mm	1.2 mm	Steel

## Grid

Length	Width	Thickness	Material
1200 mm	100 mm	1.2 mm	Steel
1200 mm	150 mm	1.2 mm	Steel
1200 mm	200 mm	1.2 mm	Steel
1200 mm	300 mm	1.2 mm	Steel



- 1、Panel
- 2、Grid
- 3、Center Box
- 4、L-angle
- 5、Bolt



# Products Series: WG-type-wide Grid Ceiling Series



## System Description:

Wellbone® WG-type-wide Grid Ceiling Series gives a clear pattern and provides the greatest flexibility for installation. It is suitable for open style office and shopping mall.

For the Non-standard size, wide grid is available from 50~1200mm width with up to 4000mm in length. Panel is available from 100~1500mm width with up to 4000mm in length. Curved panel is also available. The thickness and flange of the wide grid and panel are various depends on the size and the design. We can provide system solutions and details based on your unique design.

Material: Aluminum Alloy / Galvanized Steel  
Coating: Powder Coating / PVF2  
Color : RAL Color  
Perforation: Refer to Perforation Pattern

## Installation:

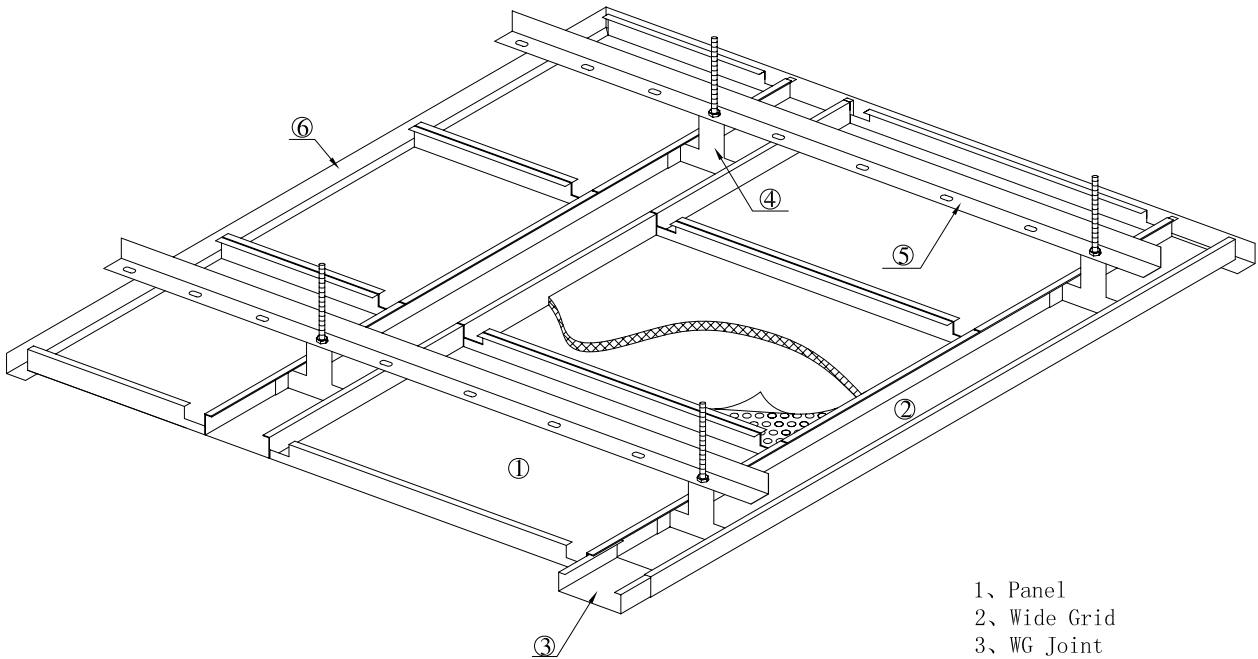
Wide Grid is suspended by the L-shape or C-shape pre-punched runner. The panel is placed between the middle of two wide grids to complete the installation. All accessories are made from galvanized steel.

## Specification Table Ceiling Panel

Length	Width	Thickness	Material
1200 mm	300 mm	0.7 mm	Aluminum
1200 mm	300 mm	1.0 mm	Aluminum
1200 mm	400 mm	0.8 mm	Aluminum
1200 mm	400 mm	1.0 mm	Aluminum
1200 mm	600 mm	1.0 mm	Aluminum
1200 mm	600 mm	1.2 mm	Aluminum

## Wide Grid

Length	Width	Thickness	Material
1200 mm	100 mm	1.2 mm	Steel / Aluminum
1200 mm	150 mm	1.2 mm	Steel / Aluminum
1200 mm	200 mm	1.2 mm	Steel / Aluminum
1200 mm	300 mm	1.2 mm	Steel / Aluminum



- 1、Panel
- 2、Wide Grid
- 3、WG Joint
- 4、WG Hanger
- 5、Perforated L-runner
- 6、L-angle



# Products Series: CH-type Linear Ceiling Series



## System Description:

Wellbone® CH-type Linear Ceiling Series is made of standard width ceiling panel. It is suitable for corridor, lift lobby, bathroom and kitchen. The ceiling is suspended by U-shape runner. But the ceiling panel can be hanged free with the ceiling width under 2000mm.

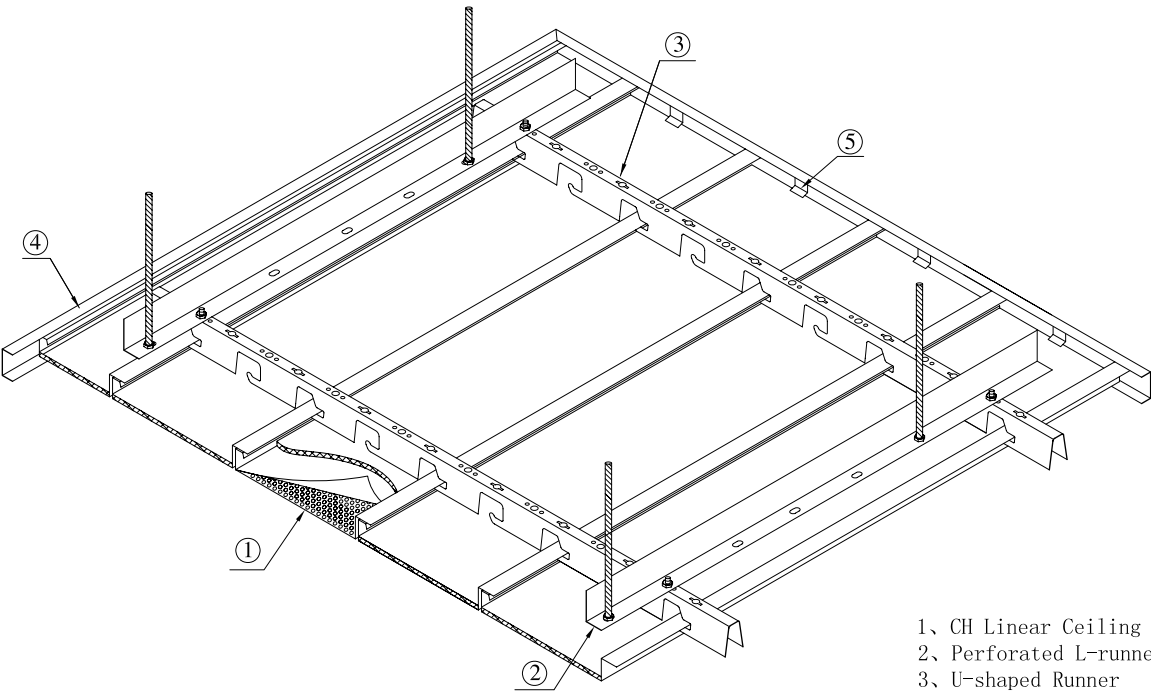
**Material:** Aluminum Alloy / Galvanized Steel  
**Coating:** Powder Coating / PVF2  
**Color:** RAL Color  
**Perforation:** Refer to Perforation Pattern

## Installation:

The trimming angle is fixed on the perimeter. The ceiling is suspended by U-shape runner. All accessories are made from galvanized steel.

## Specification Table

Width
200 mm
250 mm
300 mm
350 mm
400 mm
450 mm



- 1、CH Linear Ceiling
- 2、Perforated L-runner
- 3、U-shaped Runner
- 4、Windproof C-shaped Trimming
- 5、Windproof Clip



# Products Series: CR-type Wide Linear Ceiling



## System Description:

Wellbone® CR-type Wide Linear Ceiling is made of standard width ceiling panel. The ceiling is suspended by R-type runner. But the ceiling panel can be hanged free with the ceiling length under 2000mm.

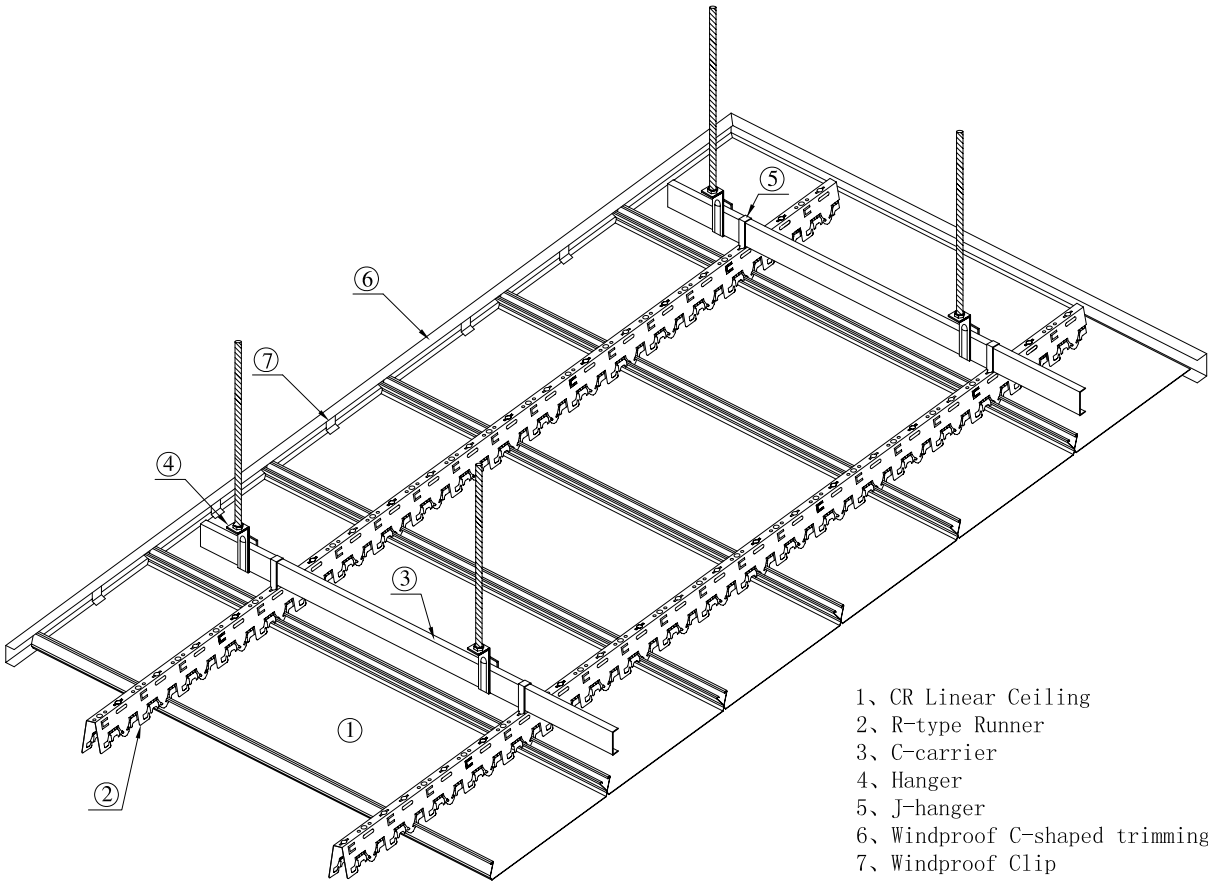
Material: Aluminum Alloy / Galvanized Steel  
Coating: Powder Coating / PVF2  
Color: RAL Color  
Perforation : Refer to Perforation Pattern

## Installation:

The trimming angle is fixed on the perimeter. The ceiling is suspended by R-type runner. All accessories are made from galvanized steel.

## Specification Table

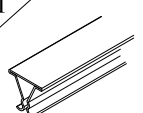
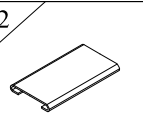
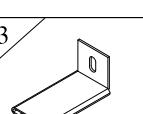
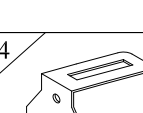
Width
200 mm
250 mm
300 mm
350 mm
400 mm
450 mm



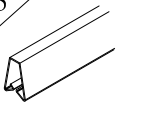
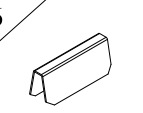
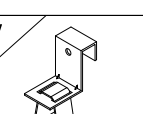
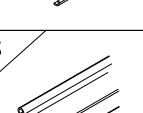
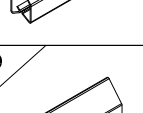
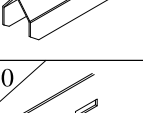
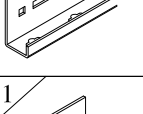
- 1、CR Linear Ceiling
- 2、R-type Runner
- 3、C-carrier
- 4、Hanger
- 5、J-hanger
- 6、Windproof C-shaped trimming
- 7、Windproof Clip

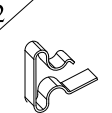
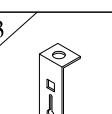
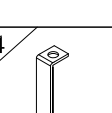


## CP022-type Clip-in ceiling series

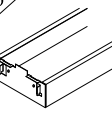
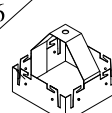
1		Code: CP101 Product: Triangular-runner Material: Galvanized steel
2		Code: CP102 Product: Runner-joint Material: Galvanized steel
3		Code: CP103 Product: Runner wall-bracket Material: Galvanized steel
4		Code: CP104 Product: Cross clip Material: Galvanized steel

## CP022-type Clip-in ceiling series

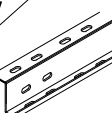
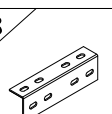
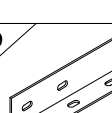
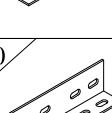
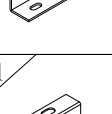
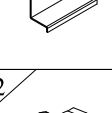
5		Code: CP201 Product: A-runner Material: Galvanized steel
6		Code: CP202 Product: A-runner joint Material: Galvanized steel
7		Code: CP203 Product: A-type cross clip Material: Galvanized steel
8		Code: CP301 Product: Profile runner Material: Galvanized steel
9		Code: CP302 Product: Profile runner joint Material: Galvanized steel
10		Code: CP303 Product: J-carrier Material: Galvanized steel
11		Code: CP304 Product: J-carrier joint Material: Galvanized steel

12		Code: CP305 Product: Safety lock Material: Spring
13		Code: CP306 Product: Profile runner hanger Material: Galvanized steel
14		Code: CP307 Product: J-carrier hanger Material: Galvanized steel

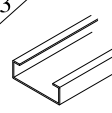
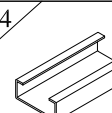
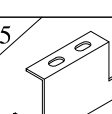
## TG-type Tartan grid ceiling series

15		Code: TG100 (wide 100) TG150 (wide 150) TG200 (wide 200) TG300 (wide 300) Product: TG grid Material: Electro galvanized steel
16		Code: TBG100 (wide 100) TBG150 (wide 150) TBG200 (wide 200) TBG300 (wide 300) Product: Centre box Material: Electro galvanized steel

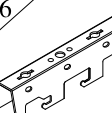
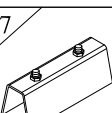
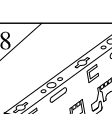
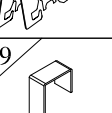
## HP-type Hook-on ceiling series

17		Code: HP 1012 HP 1015 Product: Z-runner Material: Galvanized steel
18		Code: HP 102 Product: Z-runner joint Material: Galvanized steel
19		Code: A105 Product: Perforated L-runner Material: Galvanized steel
20		Code: A106 Product: L-runner joint Material: Galvanized steel
21		Code: HP103 Product: Windproof bracket Material: Galvanized steel
22		Code: C38 Cross joint Product: Windproof bracket Material: Galvanized steel

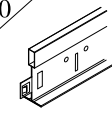
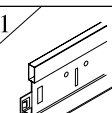
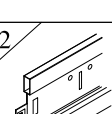
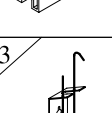
## WG-type Wide grid ceiling series

23		Code: WG100 (wide 100) WG150 (wide 150) WG200 (wide 200) WG300 (wide 300) Product: Wide grid Material: Electro galvanized steel
24		Code: WGS100 (wide 100) WGS150 (wide 150) Product: WG joint Material: Electro galvanized steel
25		Code: WGH100 (wide 100) WGH150 (wide 150) WGH200 (wide 200) WGH300 (wide 300) Product: WG hanger Material: Electro galvanized steel








## CH/CP-type Wide linear ceiling series

26		Code: SP101 Product: U-shaped runner Material: Galvanized steel
27		Code: SP102 Product: U-shaped runner joint Material: Galvanized steel
28		Code: SP103 Product: R-type runner Material: Galvanized steel
29		Code: SP104 Product: J-hanger Material: Galvanized steel





## KT-type Lay-in ceiling series








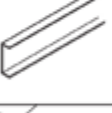


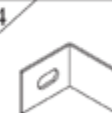
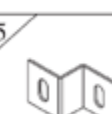
30		Code: KT15 Product: T15-tee bar Material: Galvanized steel
31		Code: KT24 Product: T24-tee bar Material: Galvanized steel
32		Code: KTA15 Product: Profile tee bar Material: Galvanized steel Aluminum rod
33		Code: KT05 Product: Hanger Material: Steel



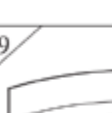
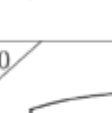
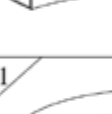
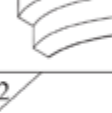




## UO-type Baffle ceiling series

34		Code: BC101 Product: Perforated Z-runner Material: Galvanized steel
35		Code: BC102 Product: Screw Material: Galvanized steel
36		Code: BC103 Product: K-shaped end cap Material: Aluminum
37		Code: BC104 Product: U-shaped end cap Material: Aluminum
38		Code: BC105 Product: C-shaped end cap Material: Aluminum
39		Code: BC106 Product: O-shaped end cap Material: Aluminum
40		Code: BC107 Product: T-cross hanger Material: Galvanized steel

## Angle / Trimming

41		Code: W20 Product: W-angle Material: Aluminum
42		Code: LW25 Product: Windproof L-angle Material: Aluminum
43		Code: L25 Product: L-angle Material: Aluminum
44		Code: WW20 Product: Windproof W-angle Material: Aluminum

45		Code: C20 Product: Windproof C-shaped trimming Material: Aluminum
46		Code: WT002 Product: Windproof LC-trimming Material: Aluminum
47		Code: WT004 Product: Windproof spring Material: Electro galvanized steel
48		Code: T25 Product: T-shaped trimming Material: Aluminum
49		Code: WT003 Product: LT-trimming Material: Aluminum
50		Code: WT001 Product: LY-trimming Material: Aluminum
51		Code: A101 Product: C-carrier Material: Galvanized steel
52		Code: A102 Product: Hanger Material: Galvanized steel
53		Code: KC40 Product: Windproof clip Material: Galvanized steel
54		Code: A103 Product: Ram clip Material: Galvanized steel
55		Code: A104 Product: Z-ram clip Material: Galvanized steel
56		Code: A105 Product: Perforated L-angle Material: Galvanized steel

57		Code: A106 Product: L-angle joint Material: Galvanized steel
58		Code: A107 Product: Z-bracket (1 or 2 holes) Material: Galvanized steel
59		Code: RL25C Product: Negative camber L-angle Material: Aluminum
60		Code: RL25S Product: Positive camber L-angle Material: Aluminum
61		Code: RW25C Product: Negative camber W-angle Material: Aluminum
62		Code: RW25S Product: Positive camber W-angle Material: Aluminum
63		Code: RC40C Product: Negative camber C-trimming Material: Aluminum or Steel
64		Code: RC40S Product: Positive camber C-trimming Material: Aluminum or Steel
65		Code: LYR6C Product: Negative camber LY-trimming Material: Aluminum
66		Code: LYR6S Product: Positive camber LY-trimming Material: Aluminum



# Metal Cladding



## System Description:

Wellbone® Cladding System is suitable for internal and external purpose. Different dimension and feature can be made referring to the requirement of our customers. The use of materials is generally aluminum or stainless steel. Honeycomb can be added to ensure the flatness and stiffness of the panel.

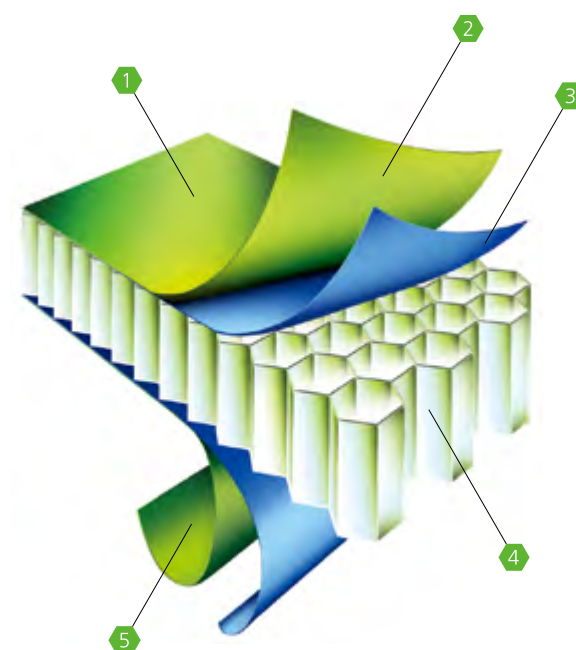
## Advantages of using honeycomb core panel are:

- Extremely lightweight
- High degree of Flatness
- Strong
- Monolithic

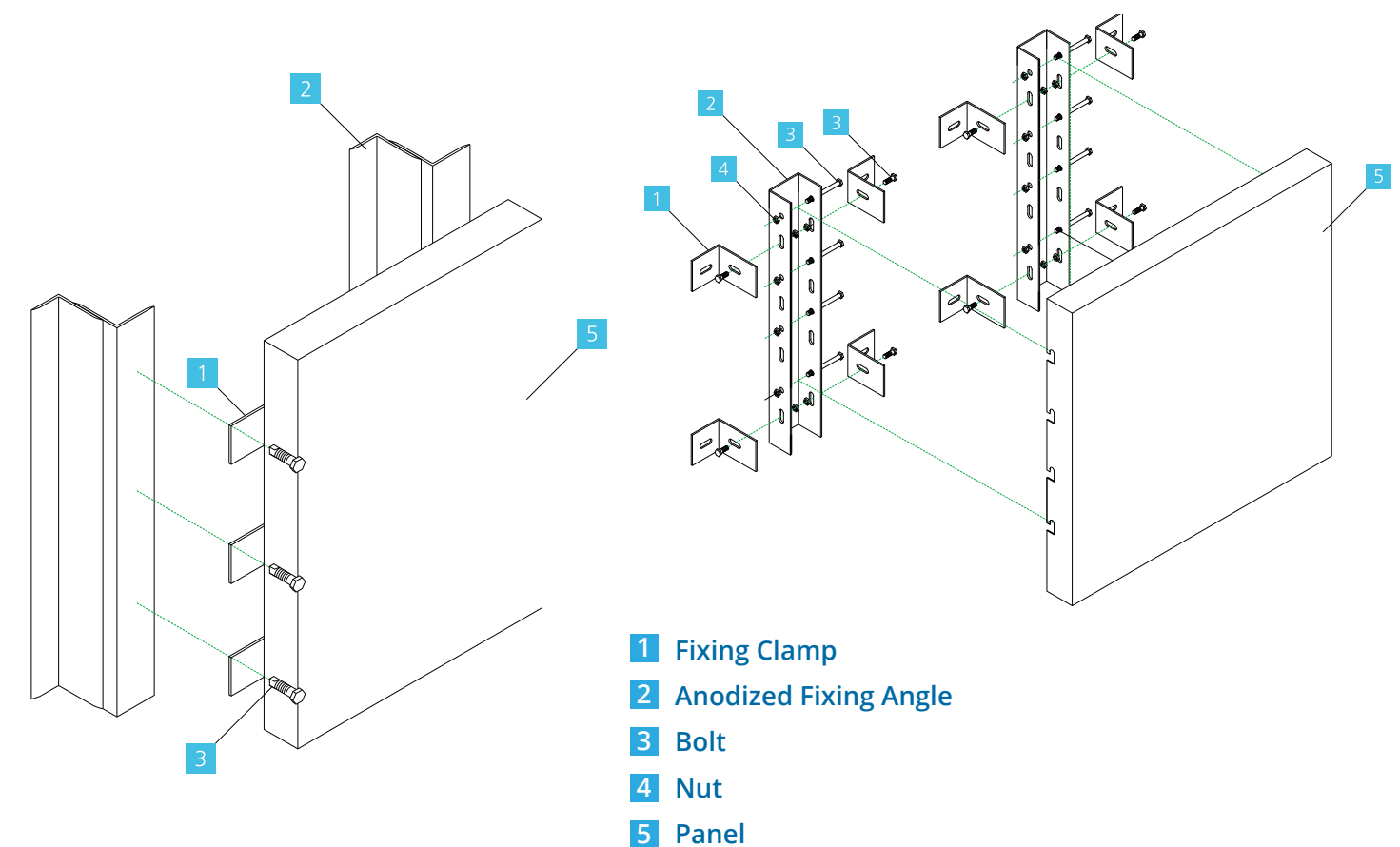
**Material:** Aluminum Alloy / Galvanized Steel

**Coating:** Powder Coating / PVF2

**Color:** RAL Color



- |   |                  |
|---|------------------|
| 1 PVDF Fluorocarbon Resin Coat            | 4 Honeycomb Core |
| 2 Front Skin (Stainless Steel / Aluminum) | 5 Back Skin      |
| 3 Glue                                    |                  |







## **Master King Limited**

### **Address:**

No. 9 Dai Fu Street, Tai Po Industrial Estate,  
Tai Po, New Territories, Hong Kong

Tel: (852) 2264 8166

Fax: (852) 2264 8167

Email: [info@masterking.com.hk](mailto:info@masterking.com.hk)

## **Kirii Sanshui Building Materials Fty. Ltd.**

### **Address:**

No. 13 Yongye Road, Yundonghai Street,  
Sanshui, Foshan, Guangdong, China  
Postal code: 528100

Tel: (86) 757-87826438 / (86)757-87823315

Fax: (86) 757-87826330

Email: [info@kirii.cn](mailto:info@kirii.cn)

Web: [www.kirii.cn](http://www.kirii.cn)