



**TOPWORLDS LIMITED**



## Hand - Made Tiles

**"Imperfection that make our tile so Beautiful"**

The processes of glazes coat, decoration and placement of tile pattern are done by ceramic specialists to ensure that all the tiles are beautifully coated and value with unique identity

### Distorted tiles and inconsistent sizes

As a result of the hand-made production process, IRIS tiles are shrunk and expanded from burning at a high temperature. This may cause inconsistent size and shape of tiles.

### Inconsistent color

Due to the burning technique at the temperature over 1,200 degree celsius, the color and coated surface, including the number of glazes (for crystal glazed tiles), are different from tile to tile.



3

IRIS | HANDMADE



## Made from 30% Recycled glass

### Recycled glass is used for production

Recycled glass material has a low melting point, which can help reduce the temperature in burning the tiles and thus save the energy.

We recycle glass such as bottles and glass fragments through the transformation process to be used as raw materials for over 30% in the production of IRIS tiles. Every ton of recycled glass can save the natural raw materials up to 1.3 tons. You can also reduce up to 315KG of Carbon Dioxide gas released to atmosphere as a result of melting the new glass.



Sample in catalog might not exact to actual





CL016  
TURQUOISE



CL017  
SUPER BLACK



CLG01  
CANDY GREY



CLO01  
CANDY ORANGE



CLR01  
CANDY RED



CLV01  
CANDY VIOLET



CLW01  
CANDY WHITE



CLW02  
MATT WHITE



CLY01  
CANDY YELLOW



CLO18  
CANDY OFF WHITE



CLO19  
IVORY



CLO20  
ROYAL BLUE



CLO21  
AQUA GREY



CLO22  
POWDER BLUE



CLO23  
HUNTER GREEN



CLO24  
WASABI



CLO25  
FRESH GREEN



CLO26  
CELADON



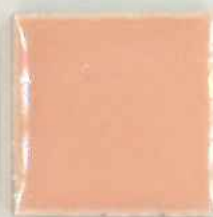
CLO27  
GRAPHITE



CLO28  
CHERRY



CLO29  
PERSIMMON



CLO30  
NUDE



GL001  
SMOKE



GL002  
CAMO GREEN



GL003  
SHADOW BLACK



GL004  
MARINE



GL005  
YELLOW BROWN



GL006  
GOLDEN BROWN



GL007  
AMAZON



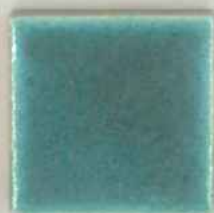
CN001  
POISON GREEN



CN002  
BURGUNDY



CN008  
BLUE MOON



CN010  
MIDNIGHT TEAL



CN011  
WALNUT



CN012  
EARL GREY



CN013  
BLACK PEARL



CN014  
ORCHID



CN015  
UOVO



CN017  
OLIVE



CN018  
SEAFOAM



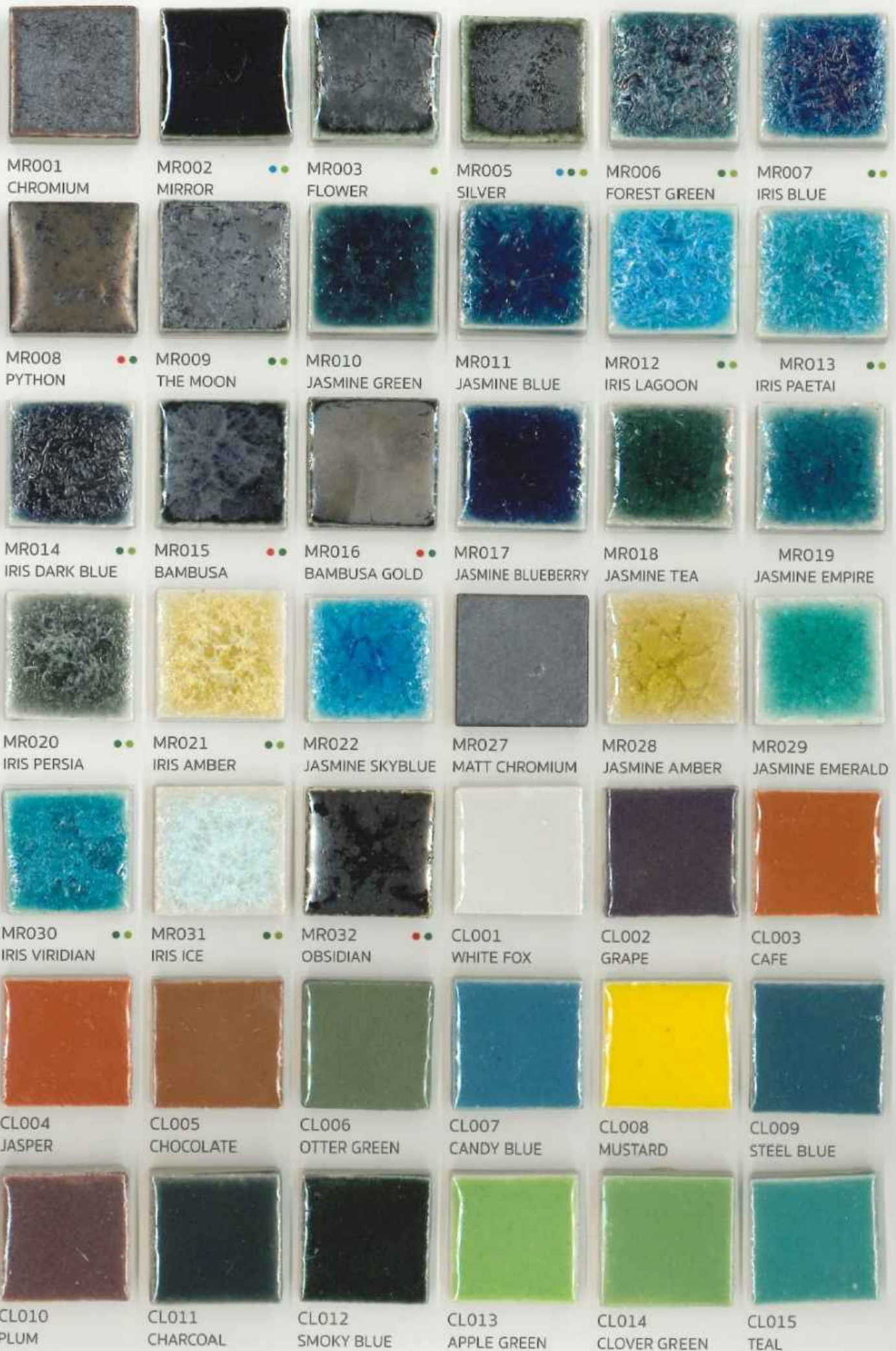
CN019  
BLUE JEANS



PT001  
RED CLAY 1

Sample in catalog might not exact to actual





Sample in catalog might not exact to actual

# Our Shapes



WAVE



RETRO



PROFILE



DIAMOND



PUNKAH



GALACTIC



SHURIKEN

[GOOD DESIGN AWARD 2011]



ROCCA

[3D]



HONEY BEE



ONE



2 BY 2



PLUS



4 BY 4



BUBBLE



WINGS . A

"ALJLA"



WINGS . R

"RIMIGES"



WINGS . C

"COVERTS"



WING . P

"PRIMARIES"



WINGS . S

"SECONDARIES"



BROOCH

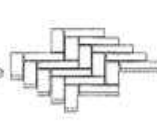


DASH LINE



SD BARS . W

"WEAVE"



SD BARS . H

"HERRING BONE"



SD BARS . B

"BRICK"



SD BARS . R

"REGULAR"



BARS . B

"BRICK"



BARS . H

"HERRING BONE"



BARS . R

"REGULAR"



SERPENT . 02

[3D]



SERPENT . 03

[3D]



SERPENT . 04

[3D]



SERPENT . 05

[3D]



SERPENT . 06

[3D]



BUTTONS . B

"BRICK"



BUTTONS . R

"REGULAR"



OCELLI . C

"CIRCLE"



OCELLI . B

"BRICK"



OCELLI . R

"RANDOM"



SPACE . X



SPACE . 1



# Glaciers glitter grout

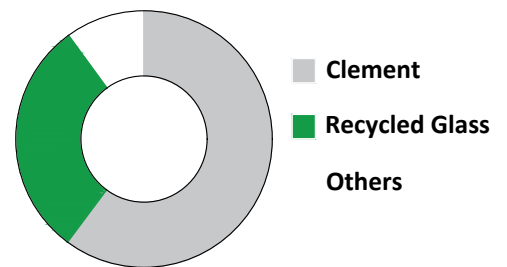
Cement based grout for grout joint 1-20 mm. wide. Ingredients with Recycled Material and Special glitter effect (Importing grade) Highly flexible and crack resistant. Suitable for wall and floor application.

## PROPERTIES

- GLACIERS GLITTERS GROUT is more durable and acid resistant.
- GLACIERS GLITTERS GROUT is easy to clean and reduce the susceptibility of dirt.
- GLACIERS GLITTERS GROUT is the most perfect choice for ceramic, mosaic, marble and granite tile for interior surface, sanitary fixture grouting.

## FEATURES

- The product is suitable for wide grout joints 1 – 20 mm.
- Light Reflection with ingredient of premium grade glitters.
- Environment friendly with ingredient of Glass Recycle material.



## GLACIERS COLOURS



GC001 | WHITE



GC002 | LIGHT GREY



GC003 | GREY



GC004 | DARK GREY



GC005 | BLACK



# Technical Characteristics



Dimension	Width & Length	5%
	Thickness	10%

**Remarks**  
With some basic informations. We tag remark colour for easy to understand each characteristic glaze.



Water Absorption	ISO10545-3
	1.18%



**Red dot** Should not be used for swimming pool



Impack resistance	UOD.39/2529
	607.22 kgf/cm <sup>2</sup>



**Blue dot** Can be used for salt water swimming pool only



Abrasion Resistance	UOD.38/2526
	Less than 0.07%



**Green dot** It is recommended to clean regularly with cleaning liquid with neutrila PH. Do not use hydrofluoric acid (glass dissolveacid), hydrochloric acid (spirits of salt), phosphoric acid or any products with the mentioned acids.



Frost resistance	ISO 10545-12
	Resistance



Slip resistance	DIN 51130
R9	Metalic series, Jamine series, Candy series, Colony series, Pantone series, Glass series
R10	IRIS series



**Lime dot** The tile surface is rough. Please read and follow the instruction for installing



Chemical resistance	ISO 10545-13
Metallic series	not resistance
IRIS series	not resistance
Jasmine series	resistance
Colony	resistance (some colour not resistance)
Pantone series	resistance
Glass series	resistance

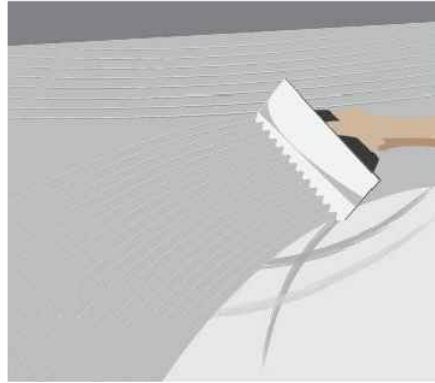




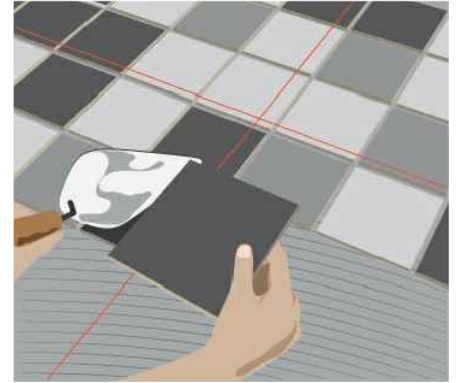
# Installation Tile



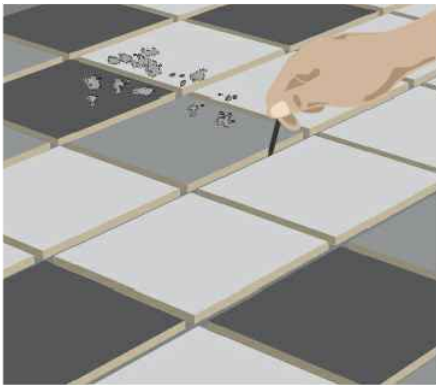
**1. Level the floor or wall to have the desired level.**



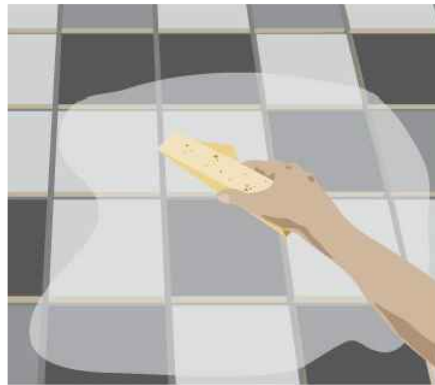
**2. Butter the adhesive for approximately 5-7 mm. thick. Use a notched trowel to make long scratches on the surface that requires tiling.**



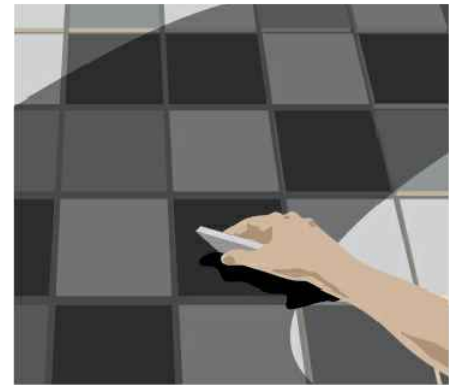
**3. Stretch the control strings vertically and horizontally to outline the interval of tiles. In case of a large area, The interval may be of 1- 1.5 meter wide. Start tiling from the center of the area. Leave the joint space for at least 6 mm.**



**4. When the paved tiles are stable, Start to clean the tiles joints to removemortar bits and surplus. Leave it to dry completely for 24 hours.**



**5. Use a wet sponge to wipe the tile surface where grouting is needed. (Wet tile surface can prevent the grout from sinking into the tile surface)**



**6. Mix the grout to it right proportion. Use a trovel or a grout spatula to wipe the grout across the tiles to put the grout into the joint. Suppress the grout evenly to be at the same level as the tile rim.**



**7. Approximately 10-15 minutes, but never more than 30 minuites after grouting (hazing), use a damp delicate sponge to wipe the surface once to one direction. Then, flip the sponge to use its clean side to wipe the surface once more. Then clean the sponge with clean water. Do not wipe it too several times. Since the tiles should be wiped immediately after grouting, the area should be separated and completed by 1 square meter each time so that the grout stain can be wipe out in time.**



**8. Use a damp sponge to clean the tiles again after grouting is complete for 1-2 hours. Leave the grout to become stable for 24 hours befor using the area for general purposes or 7 days for a swimming pool**

# Buttom Graphic Installation



**1. Level the floor or wall to have the desired level.**

Butter the mortar or the adhesive for approximately 5-7 mm. thick by using a trowel. (Buttons tiles are 8 mm. thick, net included.) Use a notched trowel to make long scratches on the surface that requires tiling.

Pave the Buttons Graphics' IRIS tiles on the area as per the desired pattern. Use the plastering trowel to press the tiles to level them. Leave the cement or adhesive to dry for 24 hours.



**3. While the cement surface becomes stable. (Do not let it dry completely). Use a brush to gently wipe the extra cement out of the surface until the pattern is visible. Extra cement should be removed from the blank area of the pattern until it has the same level to prevent the surface from becoming wavy**



**5. Use dry cloth to clean the tiles again until all the cement stain is completely removed.**



**2. \*If cement is used (for wall and floor), mix the cement with water to the right proportion. (Plastering cement or white plastering cement is such as Tiger Brand Cement Decor, Slow Drying Formula). Powder color may be mixed to add color as desired.**

**\*\*If grout is used (for wall only), use the grout for extra wide joint or the grout formula as recommended by IRIS to grout the joints between the tile design to level out with the tile surface.**



**4. Then, use a damp sponge to wipe the cement stain out of the tile surface. The surface should be wiped in the same direction and the sponge should be frequently washed with clean water. If the pattern appears as desired. Leave the cement to dry for approximately 2 hours.**



**6. Leave the cement to become solid completely before general usage.**



**Topworlds Limited**

**泰樺有限公司**

Room E, 13/F, Mai Hong Industrial Building, 160 Wai Yip Street,  
Kwun Tong, Kowloon, Hong Kong  
香港九龍觀塘偉業街160號美康工業大廈13樓E室

Tel 電話 : (852) 2156 3666  
Email 電郵 : [info@topworlds.com.hk](mailto:info@topworlds.com.hk)  
Facebook : Topworlds Limited  
Twitter : Topworlds Limited

Fax 傳真 : (852) 2156 1399  
Website : [www.topworlds.com.hk](http://www.topworlds.com.hk)  
Instagram : topworldsltd  
LinkedIn : Topworlds Limited

