

JUMBO GYPSUM BLOCK BLOCK WALL SYSTEM



Quality For Better Life 只为品质生活

 正霸建材® Jumbo®
Gypsum



Company Introduction

Fujian Jumbo New Material Corporation Limited located in Fujian , China , with an area of 220,000m², produces 5 million m² of high-strength gypsum blocks per year , currently ranking first in China , and produces special dry-mixed mortar products 550,000 tons every year . 'Jumbo Gypsum Block' are applied maturely in Mainland China, and we are the pioneering supplier in Hong Kong, Macao, Taiwan, Indonesia and Malaysia, has established an outstanding reputation.

Jumbo's superiority

- 12 patents (including 4 invention patents)
- 20 research personnel, strong scientific research team
- ISO9001 Quality management system certificate
- ISO14001 Environmental management system certificate
- CE certificate
- Green label certificate in Hong Kong.
- Produce gypsum block according to BS EN 12859:2011
- Pass all kinds of test reports, in accordance with international standards
- Key enterprise in China, and ranking first in Gypsum block industry
- Excellent enterprise in gypsum industry from 2014 to 2015
- Director unit of China Construction Association
- Hundreds of successful projects in Mainland China 、 Hong Kong 、 Macao 、 Taiwan..

JUMBO Gypsum Block's superiority in the market

- Comprehensive thickness versions on different density block
- Lighter weight for easier lifting
- Most of the models are having 4 hrs Fire Rating (FRP) under BS476, part 22
- Better performance on Flexural Strength
- All categories are water repellent
- For 9m height or below, stiffening is not necessary for the common market size (100mm thickness)

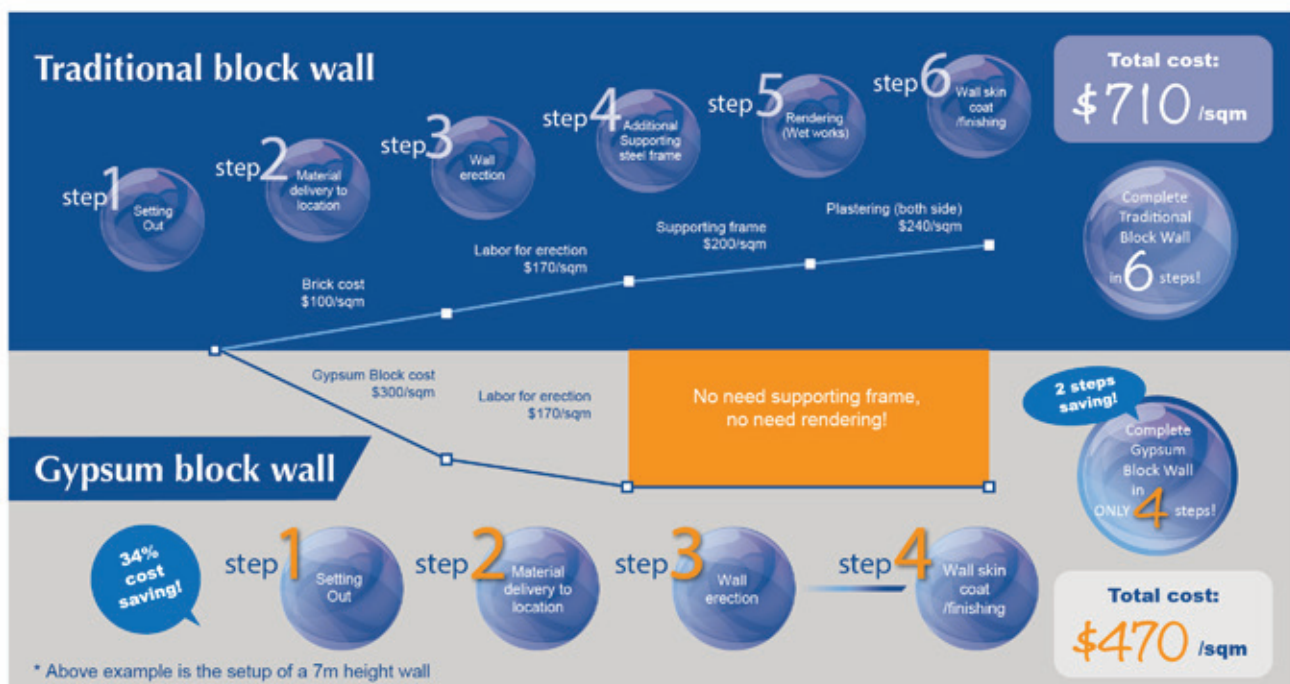
Introduction of JUMBO Gypsum Block

'JUMBO Gypsum Block' is a tongue and groove gypsum block wall system manufactured in China, incorporated the advantages of Light Weight, Fire Resistant, Thermal Resistant, Sound Insulation, Easy Installation and Competitive Pricing. 'JUMBO Gypsum Block' is also an environmental friendly building product, 100% recyclable. Wall partitioning system formed by 'JUMBO Gypsum Block' is a continuous walling system, will behave as one complete seamless wall panel. Unlike the traditional block wall jointing, 'JUMBO Gypsum Block' jointing has utilized the characteristic of chemical adhesion and physical crystallization of gypsum adhesive, which avoid cracks due to thermal expansion and contraction.

Advantages of JUMBO Gypsum Block

1. Cost Saving

In comparison with traditional concrete block wall system, 'JUMBO Gypsum Block' walling system weighs only 50% of the concrete block wall; and because of the smooth surface of the gypsum base material, no cement plastering work is required before the application of paint and other finishing materials. Thus a significant cost saving in terms of material and labor could be contributed when using 'JUMBO Gypsum Block' walling system, reducing the cost of.



2. Regulate Relative Humidity

The nature of gypsum can absorb the moisture content in the air when the humidity is relatively high, thus the problem occurred due to high humid will be eliminated.

3. Energy Efficient

'JUMBO Gypsum Block' is an energy efficient construction material, it's thermal conductivity is only 1/4 of red brick, have excellent thermal insulation effect.

4. Fire Resistance

All "JUMBO Gypsum Block" are certified with a FRP rating of 240 minutes. If traditional concrete block is used to achieve the same performance, a 225mm thickness or even larger concrete block wall system must be used. Thus the owner of can achieve more GFA than traditional concrete block wall system.

5. Light Weight

With the characteristic advantage of gypsum, "JUMBO Gypsum Block" provides a lightweight system to reduce time and cost for transportation. It allows the Engineer to reduce structural loading while designing the building.

6. Saving of Construction Time

Construction of 'JUMBO Gypsum Block' walling system is easy and fast. With the advantage of smooth surface provide by 'JUMBO Gypsum Block', plastering work will be eliminated.

7. Recyclable

"JUMBO Gypsum Block" can be demolished by cutting the wall panel into block size by top down method. These cut blocks can then be re-used for building a new wall with JUMBO Adhesive. The level of maintenance is very low due to the elimination of metal mesh, plastering, steel stiffener and lintel.

8. No Wet Trade Works

Unlike of using traditional concrete blocks, walling system formed by 'JUMBO Gypsum Block' does not require plastering, thus no wet trade works is required on site; the possibility of de-bonding plaster is also eliminated. Not necessary to say, it will cause less debris as well.

9. Sound Insulation

'JUMBO Gypsum Block' walling system provides a very significant sound insulation in comparison of other block wall system. All "JUMBO Gypsum Block" has STC ratings.

10. Water Repellent

'JUMBO Gypsum Block'soak in the water for 2 hours , average of water absorption 2.5% or < 5%, up to the EU standards of H1 or H2. All our products are Water-repellent.



Production flow chart

Quality For Better Life 只为品质生活



Fujian Jumbo New Material Corporation Limited

福建正霸新材料股份有限公司

www.jom.net.cn



JUMBO Gypsum Block Specification

Jumbo Hydro (Water-repellent) high density Gypsum Block Wall System							
Series		1,100kg/m ³			1,200kg/m ³		
Model no.		B80	B100	B150	B80(H)	B100(H)	B150(H)
Physical Size	Width	600mm	600mm	600mm	600mm	600mm	600mm
	Height	500mm	500mm	247mm	500mm	500mm	247mm
	Thickness	80mm	100mm	150mm	80mm	100mm	150mm
Dimensions Tolerance		Width:±2.5mm, Height:±1.5mm, Thickness:±0.5mm					
Weight		26.5kg	33kg	24.5kg	29kg	36kg	26.5kg
Density Tolerance		±5%					
Color		Reddish / Off White					
Fire Rating		4 Hours					
Sound Insulation		40dB	45dB	50dB	42dB	46dB	51dB
Thermal Insulation		0.36 W/(m·k)			0.40 W/(m·k)		
Water Absorption		5.0% or 2.5%					
Flexural Strength		4.0MPa			4.5MPa		
Compressive Strength		10.0MPa			14.0MPa		
Max.Wall Height		7m	9m	10m	7m	9m	10m
Surface Appearance		Smooth (Plastering not required)					
Physical Appearance		Tongue and Groove profiles on all sides					
Bonding Agent		Gypsum Adhesive					
Recommend Application		Bathroom Kitchen wall	Interior wall	Common wall Exterior wall	Bathroom Kitchen wall	Interior wall	Common wall Exterior wall

Specification above follows BS EN 12859:2011, BS EN 13279-2:2004, BS EN 1364-1.

Jumbo Gypsum Adhesive (Gypsum Plaster)	
Model no.	MB100
Packing	25 kg / bag
Coverage	Approx.2.5 ~ 6 kg/m ²
	80mm (T) to 150mm (T)
Thickness	3 mm
Color	Light Grey
Bond Strength	0.5 Mpa
Flexural Strength	5.0 MPa
Compressive Strength	10.0 MPa
Pot Life	Approx. 1 hour
Surface Appearance	Smooth (Plastering not required)



Installation Procedure

1. Mark the position of the wall



2. Lay the first layer gypsum block



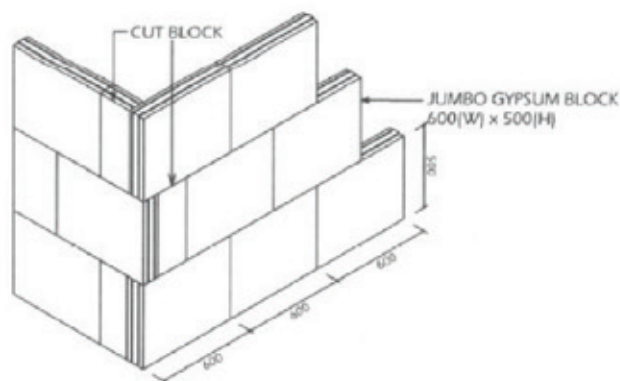
3. Door Lintel



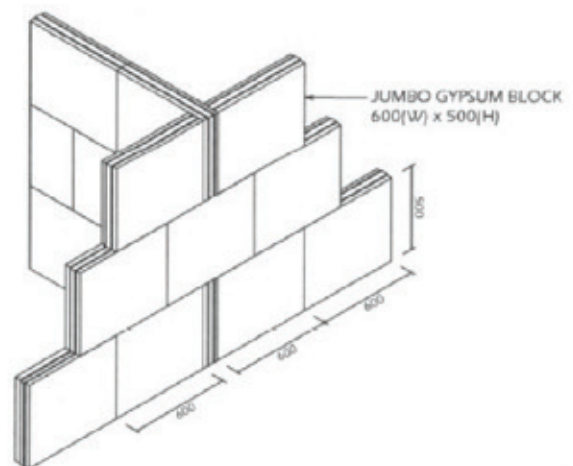
4. Girder Treatment



Typical Drawings



ARRANGEMENT AT CORNER JUNCTION
(N.T.S.)



ARRANGEMENT AT T-JUNCTION
(N.T.S.)

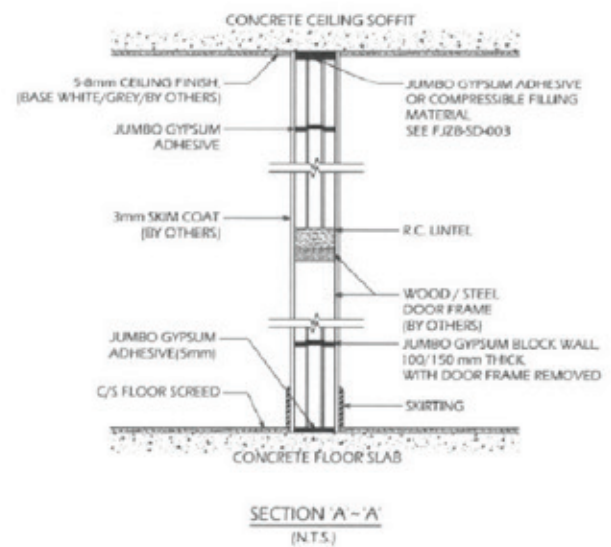
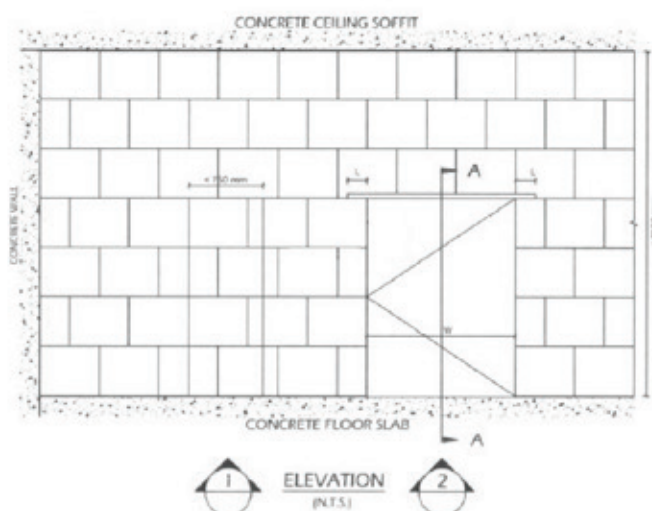
5.Finish Wall



6.Slot Opening



7.Slot Recovery



JUMBO gypsum block projects (parts of)

1. Macau Broadway Hotel



2. Hong Kong Adventist Hospital



3. Xiamen, Fujian-Interior wall used in Software Phase 2



4. Taiwan Regal Supreme



5. Taiwan River Tower



6. Taiwan Dongsan Apartment



7. Fujian-Violet Paradise Sports Park (Exterior & Interior wall)



8. Xiamen, Fujian-Offices of LIAN FA group



9. FUJIAN-Gao Xia resettlement housing project



10. Fujian -Xiamen Railway Station




JUMBO reach below standards:

1. BS EN 12859:2011 Gypsum blocks. Definitions, requirements and test methods.
2. BS EN 12860:2001 Gypsum based adhesives for gypsum blocks. Definitions, requirements and test methods.
3. JC/T 698-2010 Gypsum blocks.
4. BS 5234-2:1992 Partitions-part 2: specification for performance requirements for strength and robustness including methods of test.



Test Reports of JUMBO HD Hydro Gypsum Block:

- Fire Resistance Test Report, BS EN 1364-1:1999, 4-hr FRP, 80mm (T) block
- Fire Resistance Assessment Report, BS EN 1364-1:1999, 4-hr FRP, 100mm (T) block
- Fire Resistance Assessment Report, BS EN 1364-1:1999, 4-hr FRP, 150mm (T) block
- Fire Resistance Test Report (with concealed conduits and conduit boxes) in accordance with BS EN 1364-1:1999, 2-hr FRP, 80mm (T) block
- Fire Resistance Test Report, BS 476-Part 20 & 22, 4-hr FRP, 100mm block (Tested by Macau University)
- Water Absorption Test Report, BS EN 12859-2011
- Sound Transmission Loss Assessment Report (STC40), ASTM E90-09, 80mm (T) block
- Sound Transmission Loss Assessment Report (Rw45), BS EN ISO 10140-2:2010, 100mm (T)
- Sound Transmission Loss Assessment Report (Rw50), BS EN ISO 10140-2:2010, 150mm (T)
- Determination of Stiffness for Wall Partition, BS 5234-2:1992 Annex A, Heavy Duty Grade
- Determination of Surface Damage by Small Hard Body Impact for Wall Partition, BS 5234-2:1992 Annex B, Heavy Duty Grade
- Determination of Resistance to Damage by Large Soft Body Impact for Wall Partition, BS 5234-2:1992 Annex C, Heavy Duty Grade
- Determination of Resistance to Perforation by Small Hard Body Impact for Wall Partition, BS 5234-2:1992 Annex D, Heavy Duty Grade
- Determination of Resistance to Structural Damage by Large Soft Body Impact for Panel Wall, BS 5234-2:1992 Annex E, Heavy Duty Grade
- Determination of the Effects of Door Slamming of Wall Partition, BS 5234-2:1992 Annex F, Heavy Duty Grade
- Determination of Resistance to Crowd Pressure of Wall Partition, BS 5234-2:1992 Annex G, Heavy Duty Grade
- Lightweight Anchorage Pull-out Test for Wall Partition, BS 5234-2:1992 Annex H
- Lightweight Anchorage Pull-down Test for Wall Partition, BS 5234-2:1992 Annex J
- Heavyweight Anchorage (Wash Basin) Eccentric Downward Loading Test for Wall Partition, BS 5234-2:1992 Annex K
- Heavyweight Anchorage (High Level Wall Cupboard) Eccentric Downward Loading Test for Wall Partition, BS 5234-2:1992 Annex L
- Flexural and Compressive Strength Test for Gypsum Block, BS EN 13279-2:2004 (E)
- Flexural and Compressive Strength Test for Gypsum Bonding Adhesive, BS EN 13279-2:2004 (E)
- Bond Strength Test (Pull out), 100mm block + tiling
- Wind Load Test
- Heavy Metal / Hazardous Substance Content Test
- VOC/Radiation Content Test
- Test of Selenium Content

 <p>Jumbo™ Building Materials quality for better life 只为品质生活</p>	<p>福建正霸新材料股份有限公司 FUJIAN JUMBO NEW MATERIAL CORPORATION LIMITED TEL: 0086-592-5199019 FAX: 0086-592-5199029 福建省漳州市常山华侨经济开发区工业区</p>
---	---

JUMBO Gypsum Block Job Reference List

	Project	Product name
	Projects reference in Hong Kong	
1	Conversion of an Industrial Building into a Hotel at 101 Wai Yip Street, Kwun Tong	Jumbo Gypsum block 1100kg/100 600X500X100mm
2	Commercial Building at 60 Gloucester Road, Wai	Jumbo Gypsum block 1100kg/100 600X500X100mm
3	HK-ZH-MO Bridge Boundary Crossing Facilities	Jumbo Gypsum block 1100kg/100 600X500X100mm
4	MTRC-----Nam Cheong Station	Jumbo Gypsum block 1100kg/100 600X500X100mm
5	創新工程-----將軍澳天晉	Jumbo Gypsum block 1100kg/100 600X500X100mm
6	美基工程-----英皇道 376-380 號	Jumbo Gypsum block 1100kg/100 600X500X100mm
7	源有工程-----葵涌廣場	Jumbo Gypsum block 1100kg/100 600X500X100mm
8	權利建築-----葵涌華美工廈	Jumbo Gypsum block 1100kg/100 600X500X100mm

	9	德利建築-----銅鑼灣廣場一期	Jumbo Gypsum block 1100kg/100 600X500X100mm
	10	美基工程-----香葉道 41 號	Jumbo Gypsum block 1100kg/100 600X500X100mm
	11	堅成建築-----山市街	Jumbo Gypsum block 1100kg/100 600X500X100mm
	12	PAD Design-----屯門安定村社區會堂	Jumbo Gypsum block 1100kg/100 600X500X100mm
	13	仁利建築-----港島港安醫院	Jumbo Gypsum block 1100kg/100 600X500X100mm
	14	美基工程-----火炭落路下村 20 號	Jumbo Gypsum block 1100kg/100 600X500X100mm
	15	全達工程-----大角咀 163 號	Jumbo Gypsum block 1100kg/100 600X500X100mm
	16	美基工程-----火炭落路下村 20 號	Jumbo Gypsum block 1100kg/100 600X500X100mm
	17	友建工程-----沙田馬場	Jumbo Gypsum block 1100kg/100 600X500X100mm
	18	金森工程-----沙田隆亨村賞心樓	Jumbo Gypsum block 1100kg/100 600X500X100mm
	19	金門建築-----数据中心	Jumbo Gypsum block 1100kg/100 600X500X100mm



JUMBO **GYPSUM BLOCK** BLOCK WALL SYSTEM