

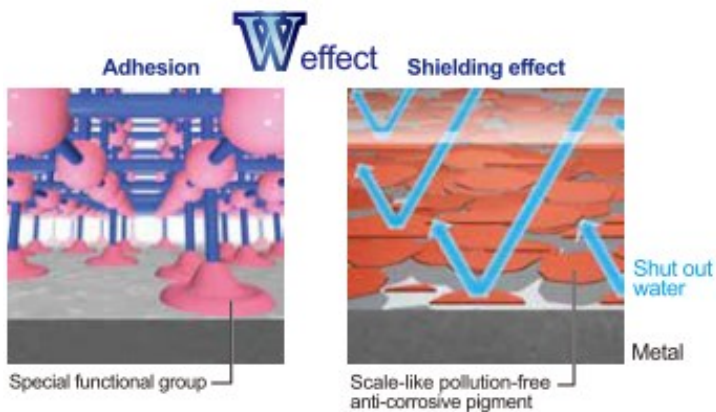
SK SMART BOSEI W

(One-pack water-based reactive curing type epoxy resin anti-rust coating)

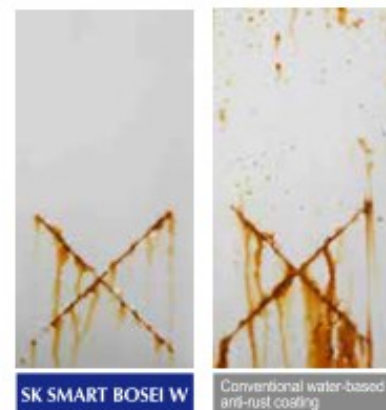
Feature 1: Excellent anti-corrosion

With the excellent adhesive strength of epoxy resin and pollution-free anti-corrosive pigment, it provides excellent anti-corrosive property, which is equivalent to or greater than JIS K 5674 Type 2. It also provides durability which can be used for exterior.

Anti-corrosion Mechanism



Salt Spray Test (480 hrs)



Feature 2: Environmentally friendly

The water-based material is low in odour and a safe specification. It does not contain harmful substances such as chrome, lead, etc.

Feature 3: Adhesive strength

Water-based epoxy resin provides strong adhesive strength to old films of steel parts and various types of metal substrates.

Feature 4: Quick drying property

Compared with conventional anti-rust coatings, it provides quick drying property and leads to shortening of construction period.

Feature 5: Workability

By rheology control technology, excellent workability has been achieved.

SK SMART BOSEI W

(One-pack water-based reactive curing type epoxy resin anti-rust coating)

Packing style

SK SMART BOSEI W

16 kg/can, 4 kg/can

Testing result based on JIS K 5674, Type 2

Test Item	Result	Criteria
Condition in container	Passed	When stirred, it makes uniform condition.
Low temperature stability (-5 °C)	Passed	No deterioration observed.
Workability	Passed	There shall be no difficulties in application.
Surface dryness	Passed	The surface shall be dry.
Appearance of paint film	Passed	Normal in appearance of paint film.
Overcoatability	Passed	There shall be no difficulties.
Bending resistance	Passed	It shall withstand bending.
Adhesion stability	Passed	There shall be no peeling.
Resistance to cyclic corrosion condition	Passed	There shall be free from blister, peeling and rust.
Heating residue (Mass fraction %)	Passed	50 or more
Lead in paint film (Mass fraction %)	Passed	0.06 or less
Chromium in paint film (Mass fraction %)	Passed	0.03 or less
Rust prevention	Passed	It shall prevent rust.

SK SMART BOSEI W

(One-pack water-based reactive curing type epoxy resin anti-rust coating)

Suitable substrates

Steel, GMS, aluminium, uPVC, plywood etc.

*In case the existing paint film is not deteriorated, sand the surface in advance.

*It is recommended to sand the surface before applying the material if it is new surface.

*In case of painted surface, remove the loosen paint film by scraper etc., and then sand surface.

* Check the adhesive strength by cross-cut test, etc. prior to the application.

Standard application specification

(23°C)

Process	Material	Dilution ratio (wt.%)	Con- sumption (kg/m2)	No. of coat	Interval			Remarks
					In process	Between processes	Final curing	
Surface treatment	<ul style="list-style-type: none">• Completely remove any mill scale, dirt, dust, oil, grease, and moisture, and clean the surface.• Completely remove any rust, lifting, and powder/dust with sandpaper or disc sander.							
Undercoat	SK SMART BOSEI W	100	0.13 – 0.15	1	-	4 hrs - 7 days	-	Wool roller, Brush
	Water	0 - 5	-					

* In case the interval between processes becomes more than 7 days, sanding is required.

Standard colours



WHITE (25-90A approximation)



MAROON (07-40P approximation)



GREY (N-75 approximation)

* The printed colours may be slightly different from actual colours.

* The colour number in a parenthesis show the approximate colour from Japan Paint Manufacturers Association.

SK SMART BOSEI W

(One-pack water-based reactive curing type epoxy resin anti-rust coating)

Application precautions

- *Pay close attention to the surface treatment, as it is very important process to increase the durability of anti-rust painting work.
- *In case the material is directly applied to metal substrate, be careful about pinhole and unpainted part because they cause spot rusting.
- *In case of stains due to dew condensation, etc. remove them by wiping with damp cloth after the surface dries.
- *Avoid application in principle when it is windy, rain or snow is forecast, the temperature is below 5°C, or the humidity is over 85%. If it is unavoidable, make temperature of atmosphere and surfaces above 5°C by heating up or using masking sheets. The application conditions can be severe especially in winter, so discuss well with all the parties concerned in advance.
- *Mix the materials homogeneously. Once opening the can, use it up quickly. Seal the can for the undiluted material and keep it in a cold and avoid the exposure to direct sunlight.
- *Do not mix with other products which are not specified by SKK as it may lower the performance.

Precautions after application

This material contains volatile chemical substances. Pay attention to safety measures for people having chemical sensitivity or allergies when handing over a project immediately after the application.

Hazard information and safety precautions

Read cautions on containers before use. Referring to MSDS (Material Safety Data Sheet) is also recommended. Ensure the safety management when handling the product.